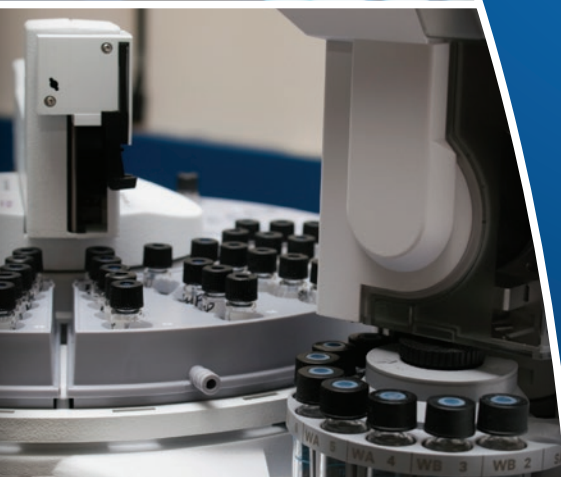


POWERVAR

Security Plus Series UPS



Power protection and reliability for your mission critical application

Over sizing a power protection system can result in higher costs to buy, install and operate. With the Security Plus Series UPS from POWERVAR, you do not have to oversize your equipment. The Security Plus Series is built to handle modern computer loads - systems with high crest factors and high current inrush peripherals - so oversizing is never an issue. In turn saving you money on your power protection equipment investment.

Security Plus offers custom solutions to meet the electrical requirements in today's most diverse environments. You have the ability to custom design the output receptacle panel and your input line cord. These options allow the Security Plus Series to offer quick and easy on-site connection to your equipment.

All models are UL listed and CE marked.

- Product sizes range from 2 kVA to 15 kVA
- Wide input voltage and frequency window provided by the online inverter
- Impressive 0.9 output power factor
- Low impedance isolation transformer
- Low input THDi
- Industry leading overload capabilities
- Diverse input voltage options
- Let through voltage is less than 10 volts normal mode and less than 0.5 volts neutral-to-ground when tested to ANSI/IEEE C62.41
- POWERVAR's three-year warranty (two-year on batteries) on parts and labor provides complete peace of mind



Low Voltage	Load Power (kVA)	Input Voltage (VAC)	Output Voltage (VAC)	Input Plug	Output Receptacles	Frequency (Hz)	Case Size	Ship Weight lb (kg)
ABCDEF2000-11	2.0	100-120	100-120	Option Available	Option Available	50/60	A	310 (130)
ABCDEF3000-11	3.0	100-120	100-120	Option Available	Option Available	50/60	A	389 (175)

High Voltage	Load Power (kVA)	Input Voltage (VAC)	Output Voltage (VAC)	Input Plug	Output Receptacles	Frequency (Hz)	Case Size	Ship Weight lb (kg)
ABCDEF2000-22	2.0	200-240*	200-240*	Option Available	Option Available	50/60	A	316 (142)
ABCDEF3000-22	3.0	200-240*	200-240*	Option Available	Option Available	50/60	A	395 (178)
ABCDEF4000-22	4.0	200-240*	200-240*	Option Available	Option Available	50/60	A	412 (185)
ABCDEF5200-22	5.2	200-240*	200-240*	Option Available	Option Available	50/60	A	443 (200)
ABCDEF6000-22	6.0	200-240*	200-240*	Option Available	Option Available	50/60	A	443 (200)
ABCDEF8000-22	8.0	200-240*	200-240*	Option Available	Option Available	50/60	B	642 (291)
ABCDEF10.0-22	10.0	200-240*	200-240*	Option Available	Option Available	50/60	B	642 (291)
ABCDEF12.0-22	12.0	200-240*	200-240*	Option Available	Option Available	50/60	C	807 (366)
ABCDEF15.0-22	15.0	200-240*	200-240*	Option Available	Option Available	50/60	C	827 (375)

* 200, 208, 220, 230 & 240 volt solutions.

* Contact factory for input and output options.

Case Dimensions (H x W x D) - in. (mm.):

A Case - 28.90 X 11.80 X 31.91 (735 X 300 X 811)

B Case - 33.46 X 13.77 X 38.61 (850 x 350 x 981)

C Case - 42.53 x 15.75 x 44.39 (1080 x 400 x 1128)