

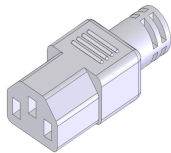
**Green IT
Product**

Wouldn't it Be Nice If.....We could find.....

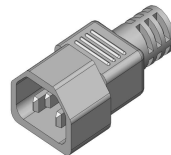
Short Server Power Cables

Rack mounted servers demand a high number of power cable inputs due to redundant feeds and the small size of servers and IT equipment. The long power cords standard with IT equipment create airflow blockage and general clutter in server cabinets. With dual power redundant feeds, different color power cables would be helpful to minimize risks.

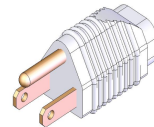
We now offer 12", 24", 36", 48" power server cables. We can color code each end to differentiate dual power feeds if desired. Standard configurations are C14 to C13, C20 to C19 and 515P to C13. Contact us today to begin to eliminate server cabinet power cable clutter!



C13



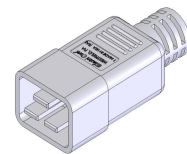
C14



515P



C19



C20

WILSON ENGINEERED SYSTEMS, INC.

11501 Columbia Park Drive West, Bldg. 100
Jacksonville, FL 32258

Phone: 904-880-0118

Fax: 904-880-0494

www.wilsonengineered.com

Server Power Cable Part Numbers

Cable Ends	Cable Length	Part Numbers	Typically Stock
C14 to C13	12"	101976	Yes
	24"	101978	Yes
	36"	101980	Yes
	48"	102734	Yes
515P to C13	12"	101982	Yes
	24"	101984	Yes
	36"	101986	Yes
	48"	102736	Yes
C20 to C19	24"	102740	Yes
	36"	102742	Yes
	48"	102744	Yes
Additional Configurations Available - Ask Us			

Standard cable is black wire. Color Markings at each available in
 Blue Brown Green Orange Purple Red White Yellow

Server Power Cables are SJT cable constructed using 18/3 for C13/C13/515P connector types. C19/C20 cables are 14/3 SJT.

Having cables in stock at your facility allows first power up of servers to be on the correct length cable. Order some today so you'll have them when you need them.

Airflow blockage by excess cable can affect cooling performance of servers. Don't let a problem with such a simple low cost solution bring down your servers.

WILSON ENGINEERED SYSTEMS, INC.

11501 Columbia Park Drive West, Bldg. 100
 Jacksonville, FL 32258

Phone: 904-880-0118
 Fax: 904-880-0494
www.wilsonengineered.com

SSPC-102708