

SYSTEM SPECIFICATIONS

SYSTEM MODEL NO.: 51S4-200XXX-480-5MXXX-A/S-UR24-UL
 SYSTEM RATING: XXX KWH FOR XX MINUTES TO 1.67 V/P.C.
 RECOMMENDED SYSTEM FLOAT VOLTAGE: 540 MIN. 552 MAX.
 SYSTEM CUTOFF VOLTAGE: 400.8
 PULL LOAD CURRENT PER SERIES CIRCUIT: XXX AMPS
 OPEN CIRCUIT VOLTAGE: 496 - 516 VDC

INSTALLATION AND MAINTENANCE

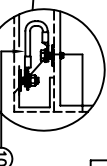
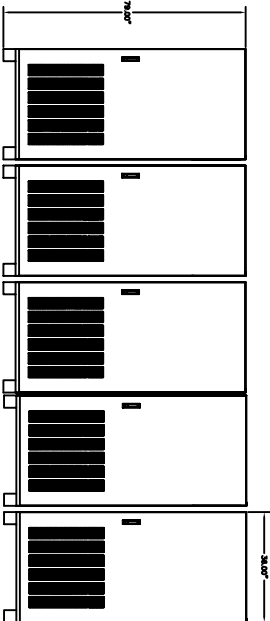
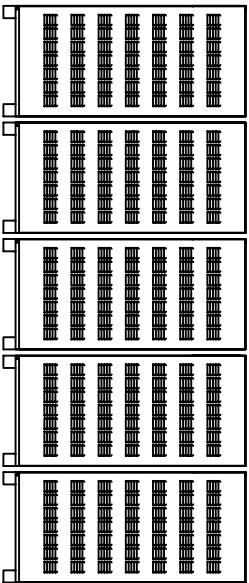
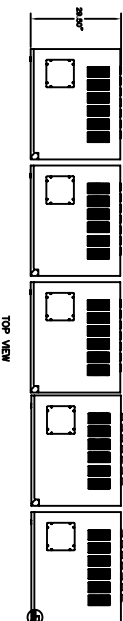
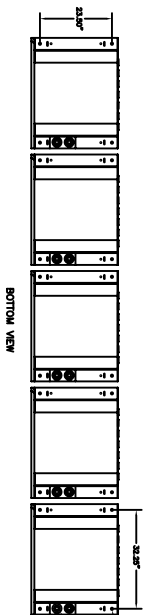
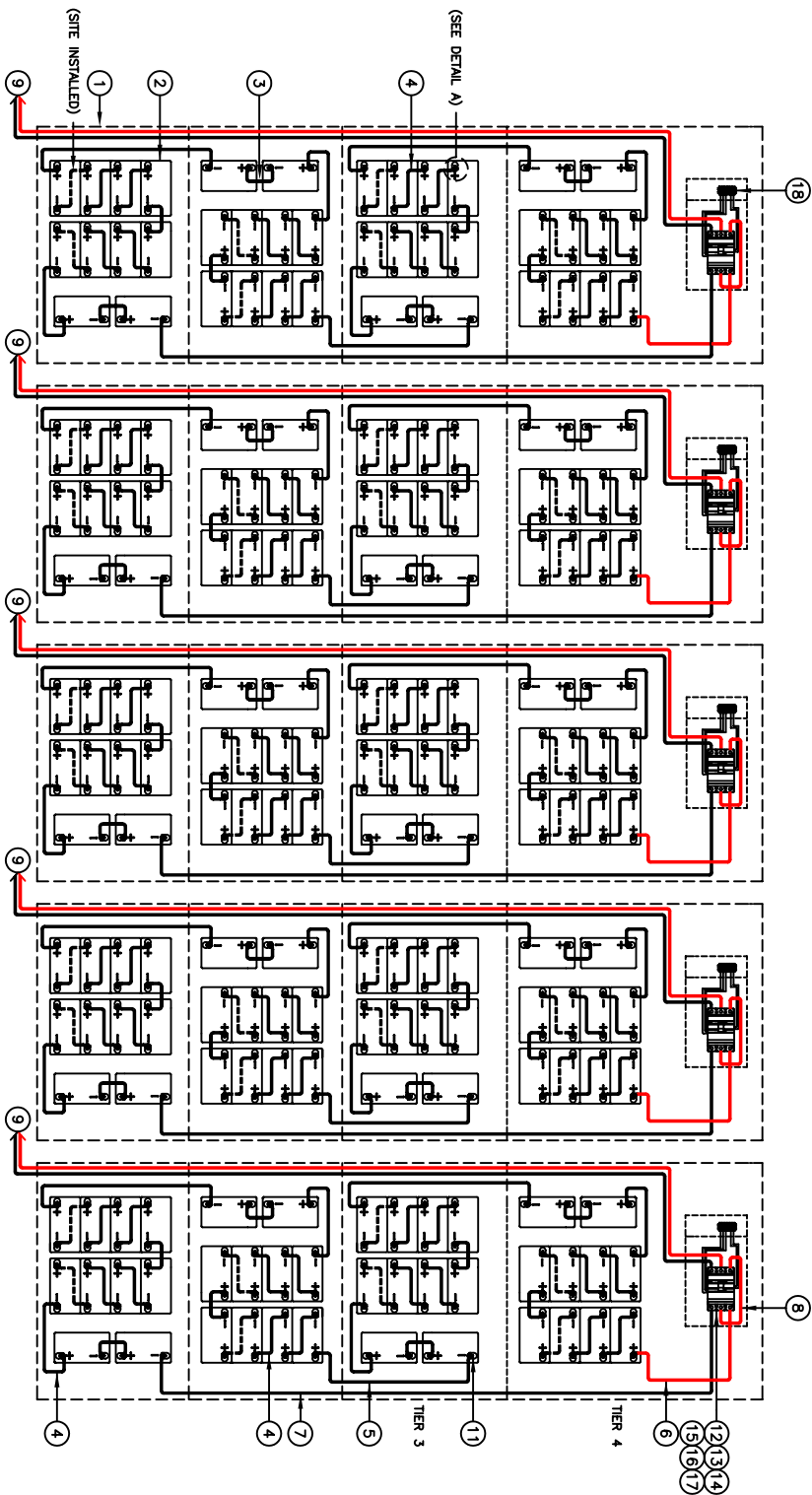
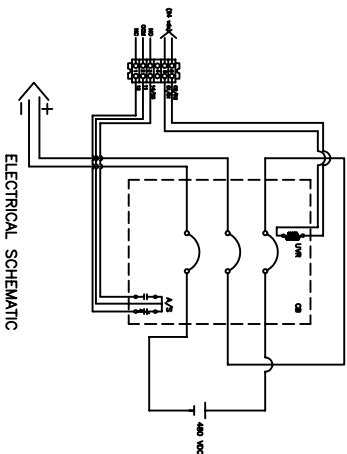
CAUTION: REFER TO INSTALLATION INSTRUCTIONS (IS-1) PRIOR TO INSTALLING CABINET.

1. ALL RECOMMENDED CUSTOMER'S CABLE GAUGES ARE BASED ON TABLE 310-18 OF N.E.C. USING 75°C CABLE IN 30°C AMBIENT.
2. INTERNAL BREAKER IS FOR OVERCURRENT PROTECTION ONLY.
3. BREAKER LUG MOUNTING TORQUE VALUE MARKED ON LUGS. BREAKER WIRE LUG TORQUE VALUE MARKED ON LUGS FUSE LUG MOUNTING TORQUE VALUE: N/A
4. USE INSULATED TOOLS FOR CABINET INSTALLATION. DO NOT ALLOW TOOLS OR CABLES TO REST ON BATTERIES.

IMPORTANT NOTE

**THE CUSTOMER AND/OR CONTRACTOR SHALL BE RESPONSIBLE FOR INSTALLING THIS EQUIPMENT IN ACCORDANCE WITH ALL APPLICABLE CODES AND REGULATIONS

***WHEN HANDLING, KEEP UPRIGHT WITHIN +/- 15 DEGREES.



IMPORTANT NOTE
 ALL CONNECTIONS MUST BE CHECKED FOR CORRECT TORQUE PRIOR TO START UP OR DEREGULATING OF SYSTEM.

QTY 1

NO.	DESCRIPTION	QTY	PART NO.
1	BATTERY CABINET	120	7B-0026
2	CABLE LUG KIT (K500)	5	CB-0002
3	UNDERVOLTAGE CONTACTS (K65-50)	5	CB-0195
4	15 AMPULATORY CONTACTS (K65-48)	5	CB-0194
5	14 PIN UNDERVOLTAGE RELEASE (K04B)	5	CB-0100
6	CIRCUIT BREAKER 500 VDC XXX A	5	CB-0100
7	BATTERY HARDWARE KIT	200	SE DETAIL A
8	CABLE (GROUND) X GA. 20" LG.	5	X-008
9	CABLE DOUBLE RUN XXX GA. MINIMUM 10'2" SERIES BY ORDER	5	XXX-059A
10	CABLE DOUBLE RUN XXX GA. 25" LG.	5	XXX-059B
11	CABLE DOUBLE RUN XXX GA. 35" LG.	5	XXX-059C
12	CABLE DOUBLE RUN XXX GA. 55" LG.	5	XXX-059D
13	CABLE DOUBLE RUN XXX GA. 75" LG.	5	XXX-059E
14	CABLE DOUBLE RUN XXX GA. 95" LG.	5	XXX-059F
15	CABLE DOUBLE RUN XXX GA. 115" LG.	5	XXX-059G
16	CABLE DOUBLE RUN XXX GA. 135" LG.	5	XXX-059H
17	CABLE DOUBLE RUN XXX GA. 155" LG.	5	XXX-059I
18	CABLE DOUBLE RUN XXX GA. 175" LG.	5	XXX-059J
19	CABLE DOUBLE RUN XXX GA. 195" LG.	5	XXX-059K
20	BATTERY	200	10-120XX
21	CONNECTOR	5	15A
22	TERMINAL	5	15A

REVISIONS: 10/10/08
 POWER BATTERY SYSTEMS
 BATTERY SYSTEM LAYOUT FOR
 (1) 15A CABINET (480 V) WITH
 (20) 15 V BATTERIES & BREAKERS
 51S4-200TCKX-480