

Part No.	UPS KVA	UPS Output Amp Rating	Breaker Type	Breaker Amp CB1/CB2/CB3	Voltage	KAIC Rating at 240V/480V/600V
MBSF-60K-S3	600KVA	1000A	ABB-S7	1000A/1000A/1000A	480Vac	65KAIC@480Vac

Enclosure - NEMA 1, Free Standing Enclosure.

Box/ Trim - 12 Gauge Structured/16-Gauge Covers steel finished with heat fused Beige polyester powder, electrostatically applied on a phosphatized base.

Breakers - ABB thermal-magnetic type, 1000AT, 1200AF, 80% Rated, 3-poles, supplied with (4) 500 kcmil terminal lug per phase. (8) 500kcmil Neutral Lug. Ground Buss/Stud Inside Enclosure.

Cable Entry - Cable entry may be located in top, bottom or sides (Top/Bottom Knockout Panels Provided).

Weight - Approximately 850 lbs.

OPTIONS

Toshiba Part#: MBSF-60K-S3-KK

KK: Mechanical Interlock between CB2 & CB3

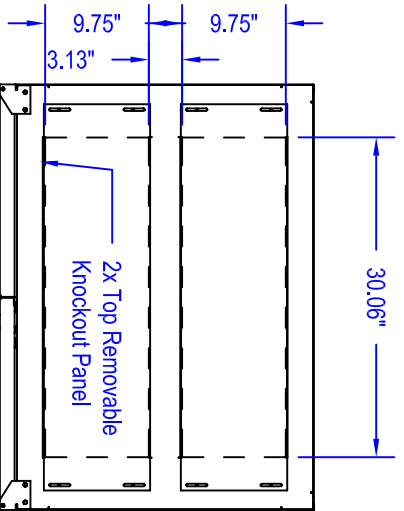
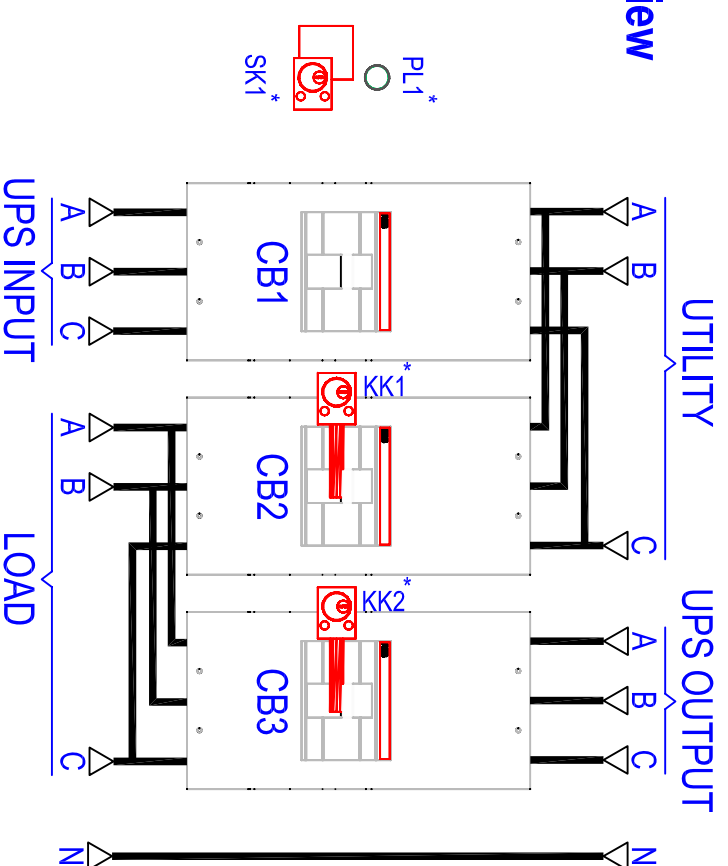
Parts: KK1-KK2

Toshiba Part#: MBSF-60K-S3-KS

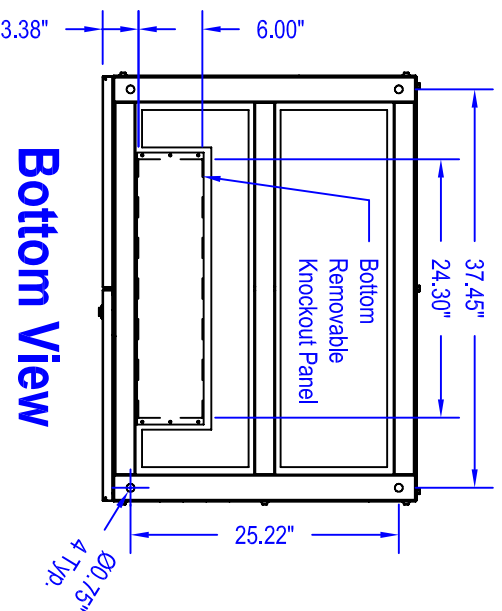
KS: 120Vac Electro-Mechanical Interlock between Module & UPS

Parts: KK1-KK2-SK1-PL1

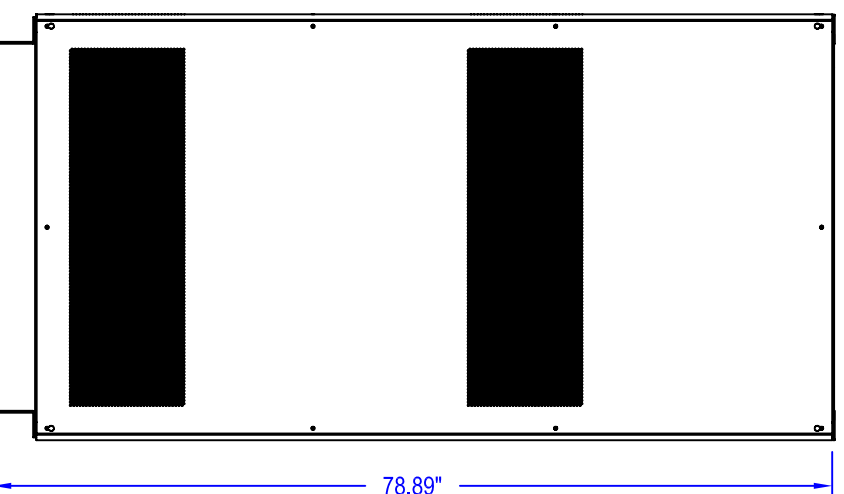
Termination View



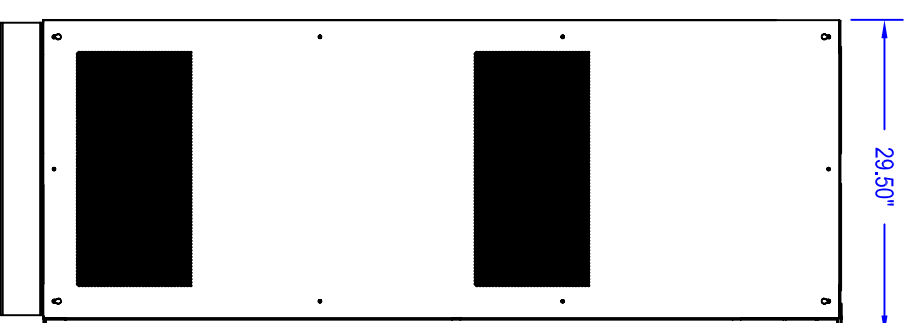
Top View



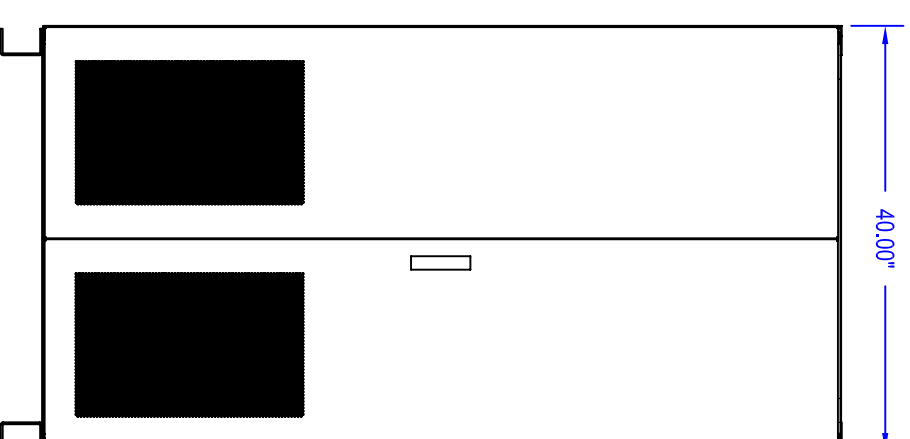
Bottom View



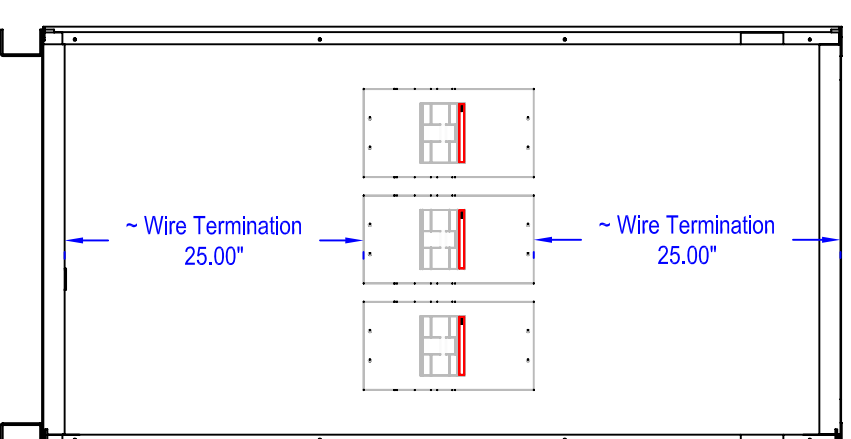
Back View



Side View



Front View



Front View / No Covers

* Please refer to OPTION table for all details.

INT	01	A.H	A.H	DATE
				Feb 18, 2009
Add New View			CHECKED BY	DATE
			APPROVED BY	DATE

THIS MATERIAL IS THE EXCLUSIVE PROPERTY OF
TOSHIBA INTERNATIONAL CORPORATION AND SHALL NOT
BE REPRODUCED, USED OR DISCLOSED TO OTHERS
UNLESS PRIOR WRITTEN AUTHORIZATION IS OBTAINED.

TITLE: 600KVA, 1000A, 480V, 3BRK Free Standing Bypass

TOSHIBA INTERNATIONAL CORPORATION
13131 WEST LITTLE YORK ROAD, HOUSTON, TX, 77041 U.S.A.

SCALE: n/a
ORDER NO.

DRAWING NO. 600KVA-3BRK480V1000A MBSF01

SH. 1 OF 1