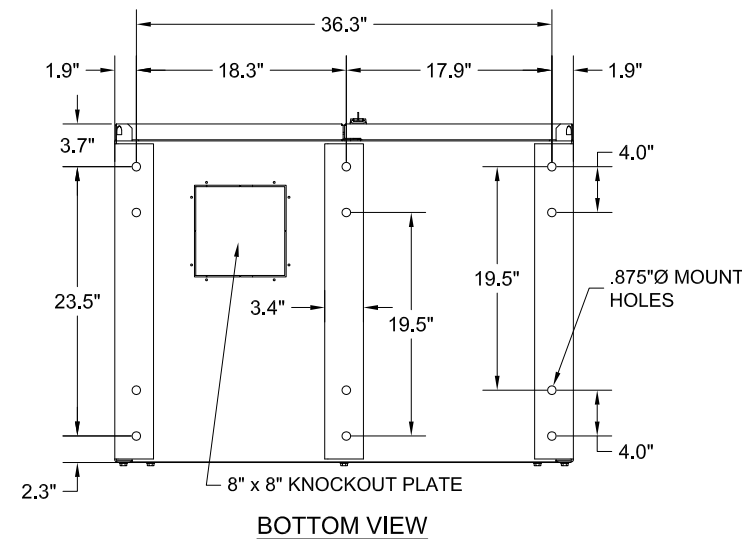
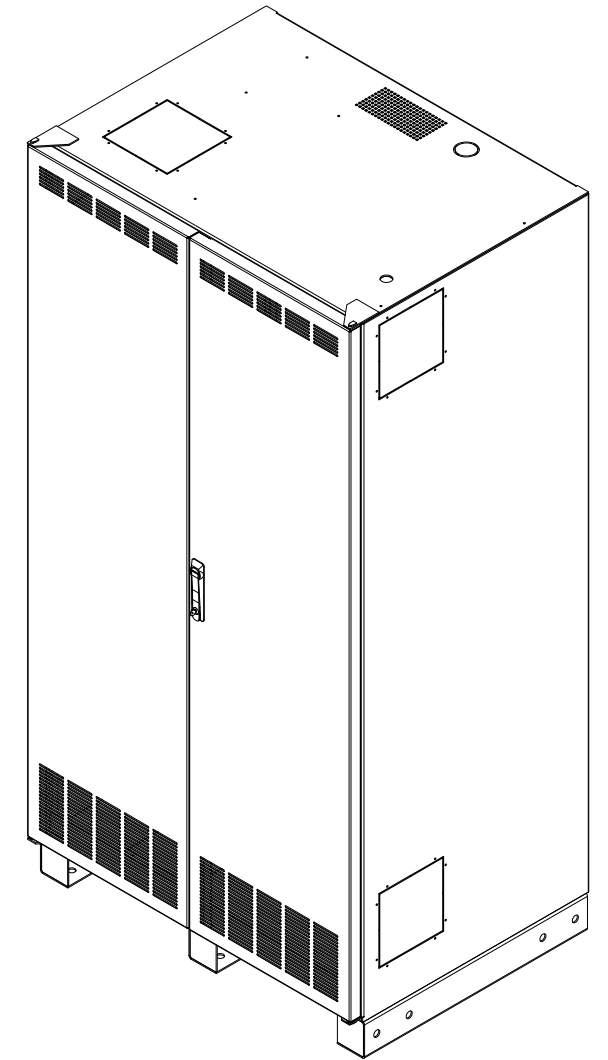
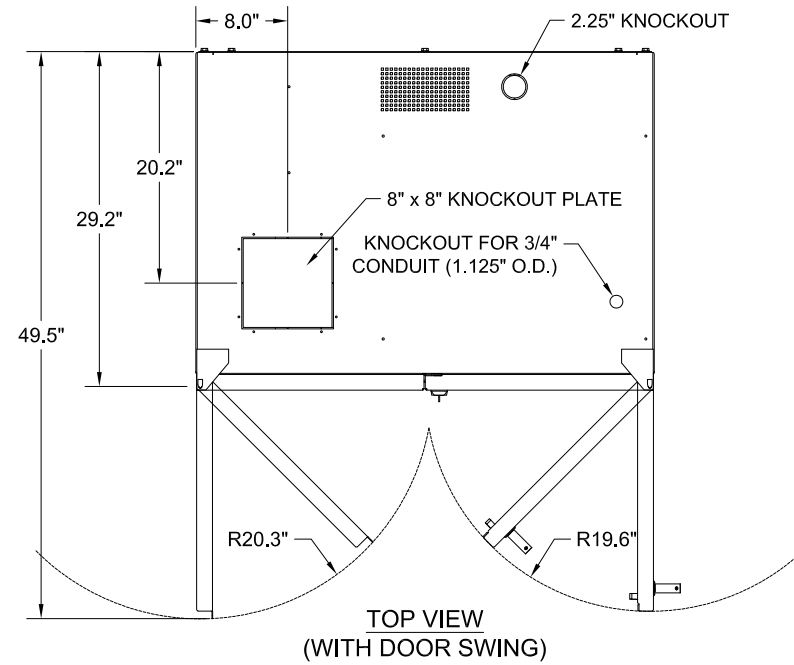
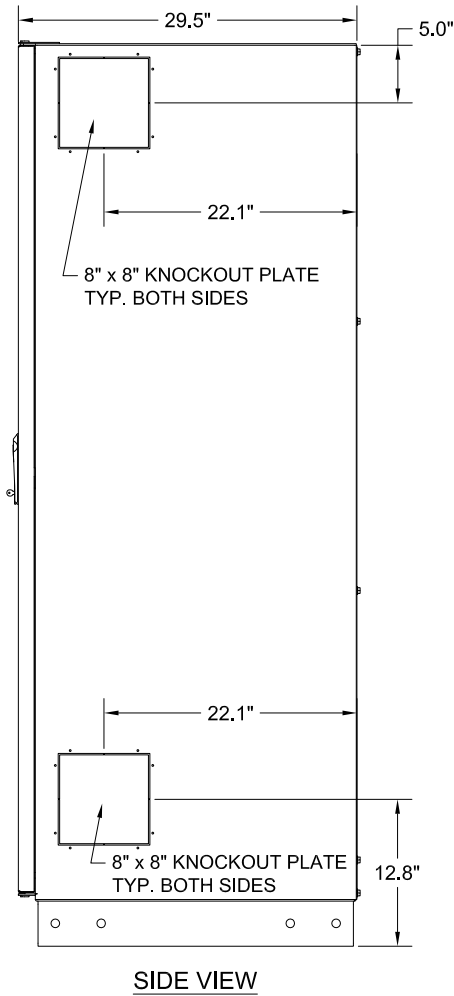


MOUNTING PAN FOR BREAKER, FUSES, TERMINAL BLOCKS, AND GROUND LUG.



- CABINET NOTES:**
 EMPTY CABINET WEIGHT: 520 Lbs.
1. NEMA 1 ENCLOSED BATTERY CABINET.
 2. FACTORY ASSEMBLED CABINETS ARE LISTED TO UL 1778.
 3. CABINET IS ZONE 4 RATED AND CERTIFIED (SEE ZONE 4 ANCHORAGE DRAWING FOR DETAILS)
 4. CABINET BODY IS 10 GA. COLD ROLLED STEEL.
 5. BATTERY SUPPORT RAILS ARE 10 GA. COLD ROLLED STEEL.
 6. DOORS & REAR COVER ARE 16 GA. COLD ROLLED STEEL.
 7. FOR G8000MM CABINETS, COLOR IS MIST WHITE, FOR G9000 CABINETS, COLOR IS BLACK.
 8. FOR EASE OF CONDUIT INSTALLATION, 16 GAUGE CONDUIT KNOCKOUT PLATES ARE PROVIDED TO REPLACE THE 10 GAUGE KNOCKOUTS IN THE CABINET. (2) 8"x8" COVER PLATES ARE PROVIDED.
 9. BATTERIES CAN BE ACCESSED FROM THE FRONT AND REAR.
 10. CABINET CAN BE MOVED WITH PALLET JACK OR FORK LIFT AT PALLET JACK ACCESS POINTS LOCATED AT FRONT OR REAR OF CABINET. FROM THE SIDES, THE CABINET CAN BE MOVED WITH ROL-A-LIFT TYPE EQUIPMENT MOVER. THE CABINET IS ONLY TO BE LIFTED FROM THE BOTTOM.

DRAWN BY:	DATE:
JRL	08/22/09
CHECKED BY:	DATE:
APPROVED BY:	DATE:

THE INFORMATION CONTAINED IN THIS DRAWING WAS PREPARED BY C&C POWER, INC. FOR TOSHIBA INTERNATIONAL CORPORATION. ANY REPRODUCTION IN PART OR AS A WHOLE WITHOUT WRITTEN PERMISSION FROM C&C POWER, INC IS PROHIBITED.

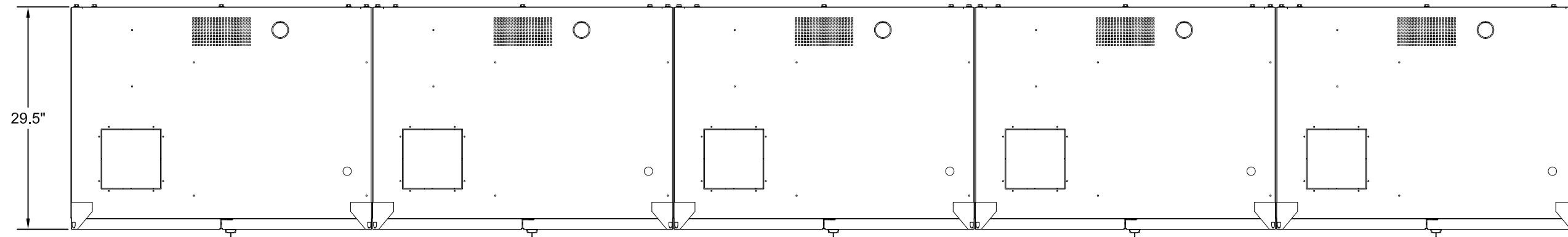
TITLE:
G8000MM & G9000 BATTERY CABINET

SCALE:
NTS

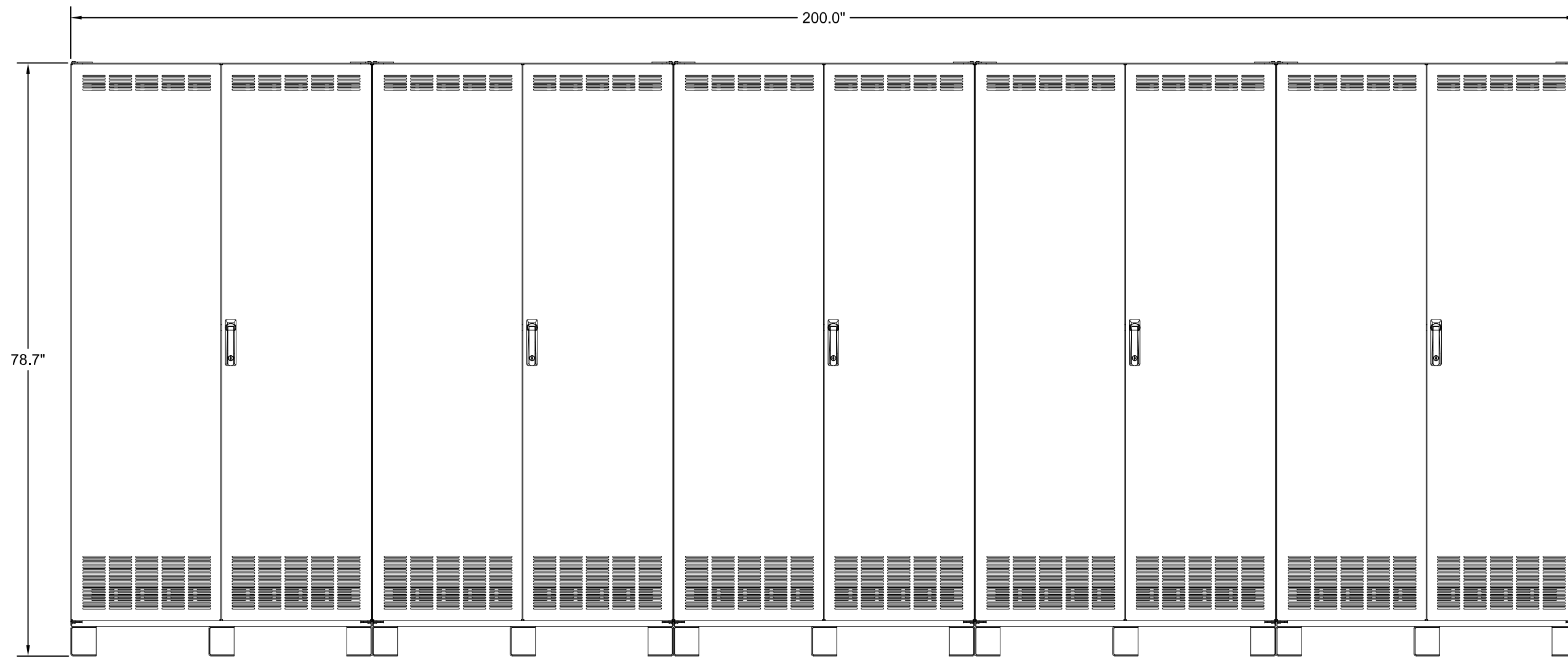
ORDER NO.:

DRAWING NO.:
91455SDT1 MULTI REV 1

TOSHIBA INTERNATIONAL CORPORATION
 13131 WEST LITTLE YORK ROAD, HOUSTON, TX, 77041 U.S.A.



TOP VIEW



FRONT VIEW

DRAWN BY:	DATE:
JRL	08/07/09
CHECKED BY:	DATE:
APPROVED BY:	DATE:

THE INFORMATION CONTAINED IN THIS DRAWING WAS PREPARED BY C&C POWER, INC. FOR TOSHIBA INTERNATIONAL CORPORATION. ANY REPRODUCTION IN PART OR AS A WHOLE WITHOUT WRITTEN PERMISSION FROM C&C POWER, INC IS PROHIBITED.

TITLE:
G8000MM & G9000 (5) BATTERY CABINET SYSTEM

SCALE:
NTS

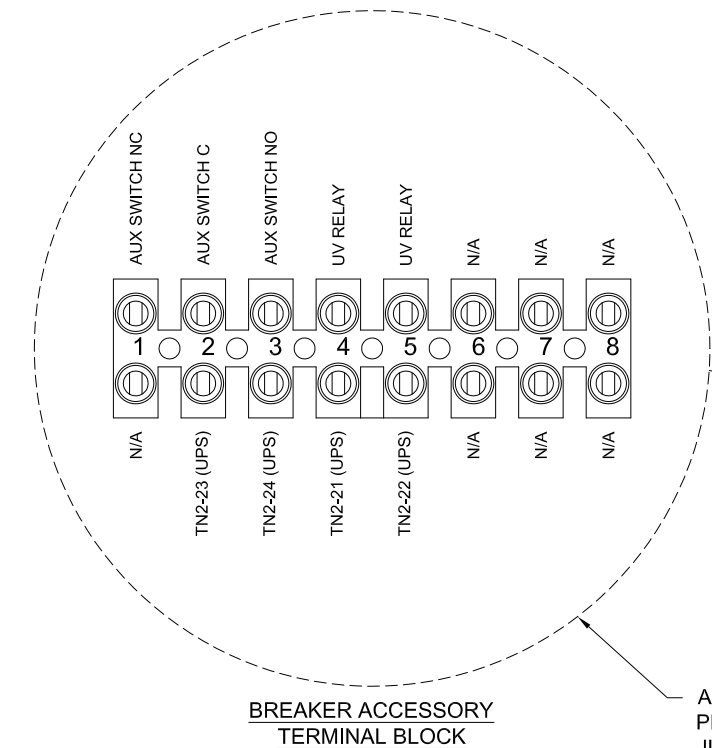
ORDER NO.:

DRAWING NO.:

91455SDT5-1 REV 1

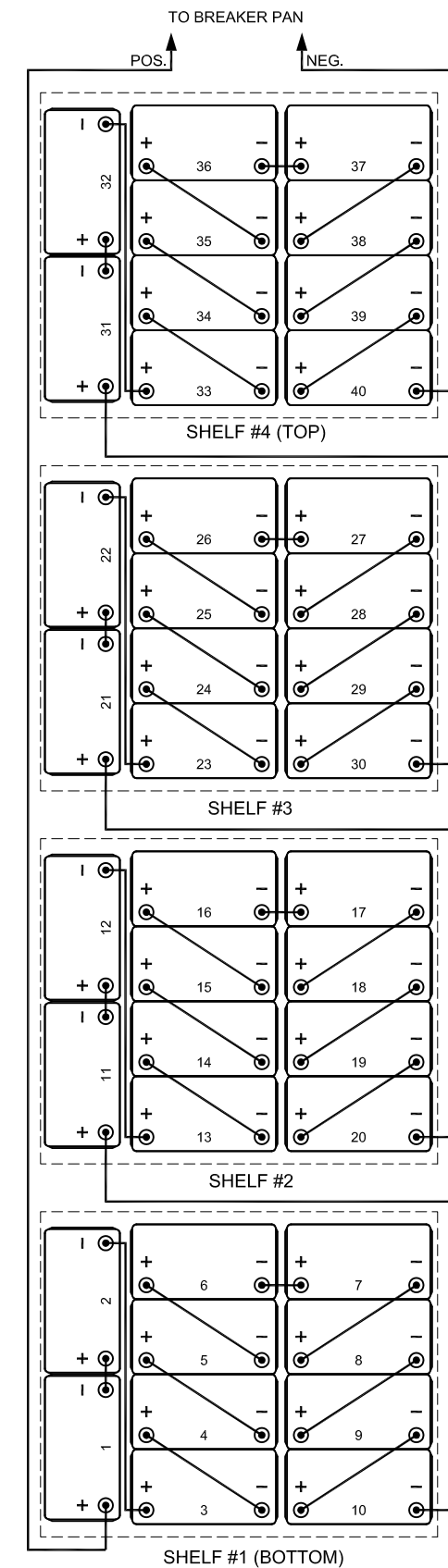
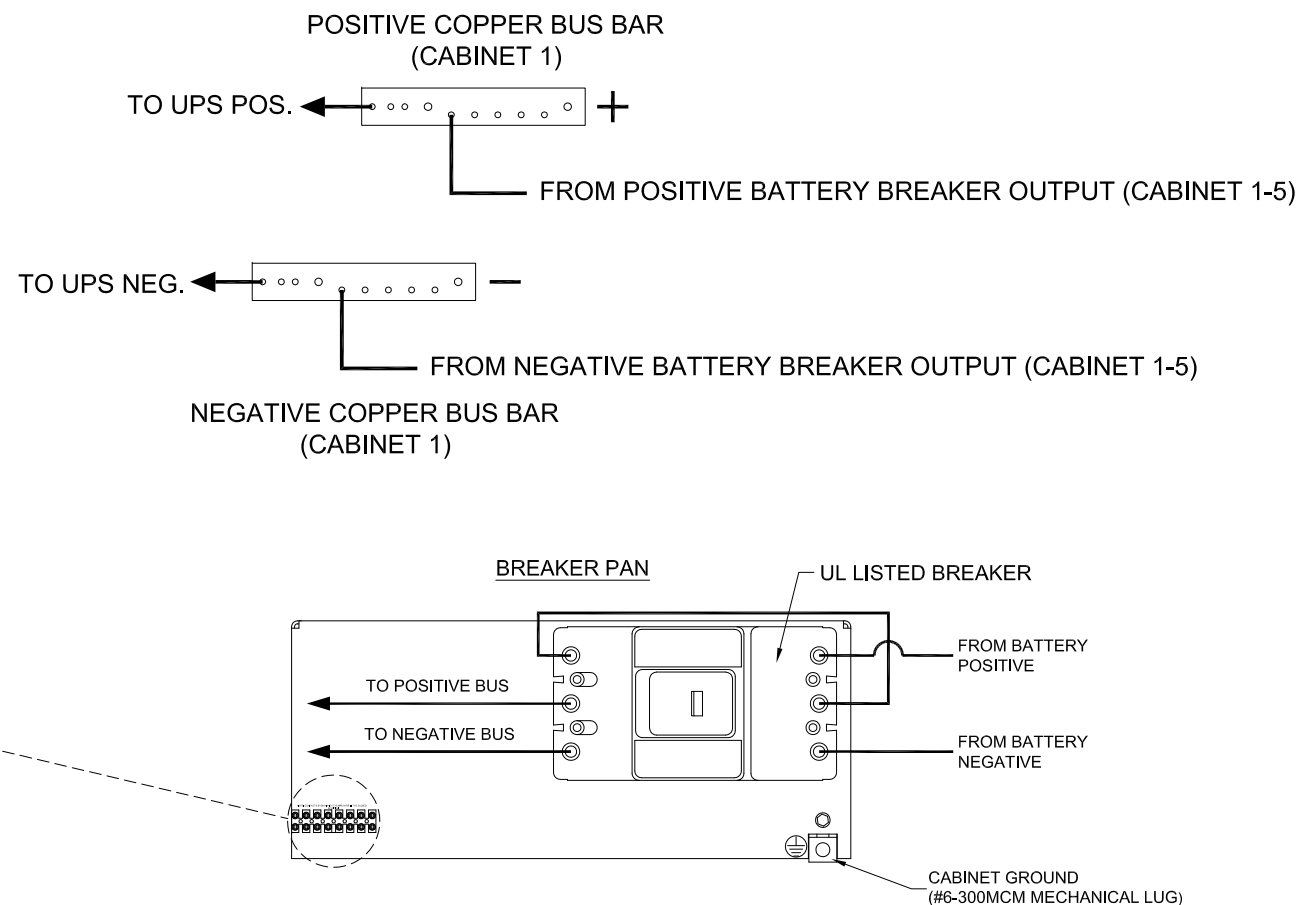
TOSHIBA INTERNATIONAL CORPORATION
 13131 WEST LITTLE YORK ROAD, HOUSTON, TX, 77041 U.S.A.

BATTERY CONFIGURATIONS	
WPC CAPACITY	MAXIMUM NUMBER OF BATTERIES PER CABINET
200 W	80
300 W	48
350 W	40
400 W	40
500 W	40
540 W	40
620 W	40



BREAKER ACCESSORY TERMINAL BLOCK

ACCESSORY OUTPUTS TO UPS ARE PROVIDED WITH CONNECTORIZED JUMPERS TO JOIN EACH CABINET. CABINET (1) IS SUPPLIED WITH A 20' LENGTH OF CABLE TO TERMINATE THE ACCESSORY TERMINALS TO THE UPS.



TYPICAL CABINET 1-5
480 VDC TYPICAL WIRING

ELECTRICAL NOTES:

1. ALL INTERNAL WIRING IS UL LISTED, MTW, STYLE, 105C, EXTRA FLEXIBLE CABLE
2. FUSES ARE UL LISTED TYPE ATM 5A
3. FUSE HOLDER IS UL RECOGNIZED
4. TERMINAL BLOCK IS UL RECOGNIZED
5. BREAKER IS UL LISTED
6. CABINETS WITH BREAKERS ARE SHIPPED WITH BREAKER IN THE OFF/OPEN POSITION
7. CABINETS ARE SHIPPED WITH BATTERY JUMPER REMOVED TO BREAK STRING VOLTAGE FOR ADDED SAFETY IN SHIPPING
8. CABLES FROM BATTERY CABINET TO UPS SYSTEM & CABINET PARALLELING CABLES ARE OPTIONAL.
9. GROUND CONNECTION IS #6-300MCM MECHANICAL LUG
10. CUSTOMER CONNECTION ON OUTPUT BUS BAR IS FOR 2 HOLE LUG ON 1-3/4" HOLE SPACING WITH 3/8-16 TAPS

DRAWN BY:	DATE:
JRL	08/07/09
CHECKED BY:	DATE:
APPROVED BY:	DATE:

THE INFORMATION CONTAINED IN THIS DRAWING WAS PREPARED BY C&C POWER, INC. FOR TOSHIBA INTERNATIONAL CORPORATION. ANY REPRODUCTION IN PART OR AS A WHOLE WITHOUT WRITTEN PERMISSION FROM C&C POWER, INC IS PROHIBITED.

TITLE:
**G8000MM & G9000 (5) BATTERY CABINET SYSTEM
480 VDC WIRING**

SCALE:	ORDER NO.:
NTS	
DRAWING NO.:	
91455SDT5-2 REV 1	