

## SYSTEM SPECIFICATIONS

2TS5 BATTERY SYSTEM (480VDC) FEATURING POWER BATTERIES  
 SYSTEM RATING: XXX KWH FOR XX MINUTES TO 1.67 V.P.C.  
 RECOMMENDED SYSTEM FLOAT VOLTAGE: 544.8 MIN. 552 MAX.  
 SYSTEM CUTOFF VOLTAGE: 400.8  
 FULL LOAD CURRENT: XXX AMPS  
 FULL LOAD CURRENT PER SERIES CIRCUIT: XXX AMPS  
 OPEN CIRCUIT VOLTAGE: 496 - 516 VDC

## INSTALLATION AND MAINTENANCE

**CAUTION: REFER TO INSTALLATION INSTRUCTIONS (IIS-1) PRIOR TO INSTALLING CABINET.**

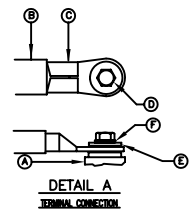
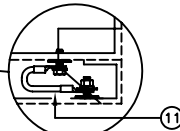
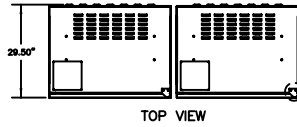
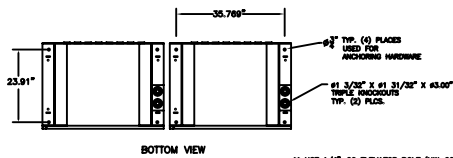
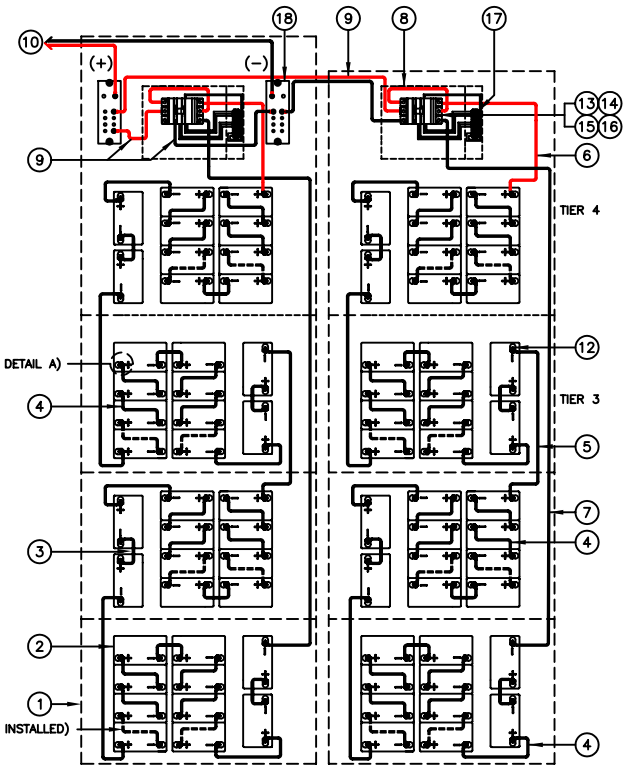
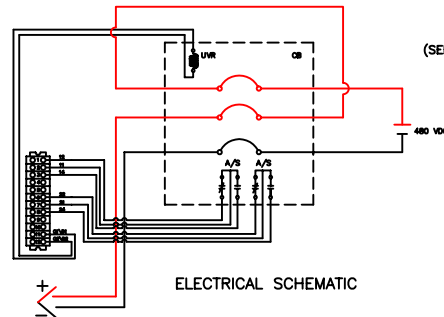
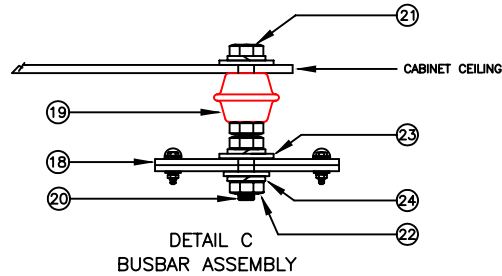
- ① ALL RECOMMENDED CUSTOMER'S CABLE GAUGES ARE BASED ON TABLE 310-16 OF N.E.C. USING 75°C CABLE IN 30°C AMBIENT.
- ② INTERNAL BREAKER IS FOR OVERCURRENT PROTECTION ONLY.
- ③ BREAKER LUG MOUNTING TORQUE VALUE: XXX IN-LBS  
 BREAKER WIRE LUG TORQUE VALUE: XXX IN-LBS  
 FUSE LUG MOUNTING TORQUE VALUE: N/A
- ④ USE INSULATED TOOLS FOR CABINET INSTALLATION. DO NOT ALLOW TOOLS OR CABLES TO REST ON BATTERIES.

### IMPORTANT NOTE

ALL CONNECTIONS TO BE RETORQUED ANNUALLY.  
 ALL CONNECTIONS MUST BE CHECKED FOR PROPER TORQUE PRIOR TO START UP OR ENERGIZING OF SYSTEM.

### IMPORTANT NOTE

\*\*\*THE CUSTOMER AND/OR CONTRACTOR SHALL BE RESPONSIBLE FOR INSTALLING THIS EQUIPMENT IN ACCORDANCE WITH ALL APPLICABLE CODES AND REGULATIONS  
 \*\*\*WHEN HANDLING, KEEP UPRIGHT WITHIN +/- 15 DEGREES.



ITEM	DESCRIPTION	QTY.
F	SPRING LOCK WASHER	1
E	WASHER	1
D	BOLT	1
C	CABLE LUG	1
B	CABLE	1
A	BATTERY TERMINAL	1

\* CONTAINED IN BATTERY HARDWARE KIT (HMP-10)  
 SEE BATTERY LABEL FOR TORQUE VALUES.  
 FOR PRC/TC BATTERY SUFFIX "C"

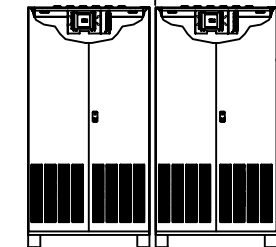
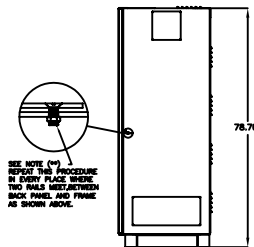
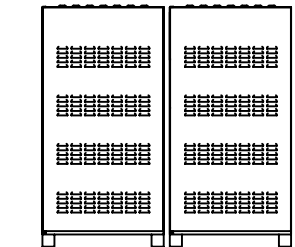
ITEM	DESCRIPTION	QTY.
G	NUT	1
F	SPRING LOCK WASHER	1
E	WASHER	1
D	BOLT	1
C	STUD POST	1
B	CABLE LUG	1
A	CABLE	1
A	BATTERY TERMINAL	1

\* CONTAINED IN BATTERY HARDWARE KIT (HMP-15)  
 SEE BATTERY LABEL FOR TORQUE VALUES.  
 FOR PRC/TC BATTERY SUFFIX "S"

\*\* CABINET COLOR: TOSHIBA MIST WHITE FOR 69000MM TOSHIBA BLACK FOR 69000

19	BATTERY RAIL INSULATION	24	
24	5/16 LOCK WASHER	4	HW-0006
23	5/16 FLAT WASHER	4	HW-0005
22	5/16-18 UNC HEX NUT	12	HW-0007
21	5/16-18 UNC x 5/8" HEX HEAD SCREW	4	HW-0008
20	5/16-18 UNC x 2" FULLY THREADED STUD	4	HW-0009
19	5/16-18 STANDOFF	4	CC-0002
18	BUSBAR (THIN x 2)	4	RMBB23-0003
17	TERMINAL BLOCK (671R2212)	2	TB-0076
16	CABLE LUG KIT	2	XXX
15	24V UNDERVOLTAGE RELEASE	2	XXX
14	AUXILIARY SWITCH	2	XXX
13	CIRCUIT BREAKER 500 VDC XXX A	2	XXX
12	BATTERY HARDWARE KIT	60	SEE DETAIL A
11	CABLE (GROUND) X GA. 20" LG. 2	X-20B	
10	CABLE TRIPLE RUN XXX MCM MINIMUM	2x3	SHIPPED BY CUSTOMER
9	CABLE XX GA. 80" LG. 4	XX-80E	
8	CABLE XX GA. 38" LG. 2	XX-38E	
7	CABLE XX GA. 95" LG. 2	XX-95BE	
6	CABLE XX GA. 55" LG. 2	XX-55BE	
5	CABLE XX GA. 25" LG. 6	XX-25B	
4	CABLE XX GA. 12" LG. 6x6	XX-12B	
3	CABLE XX GA. 8" LG. 18	XX-8B	
2	BATTERY	80	TC-12150C
1	CABINET	2	TSS

\*\* NO.1 DESCRIPTION QTY. PART NO.



SEE NOTE (4) REPEAT THIS PROCEDURE IN EVERY OTHER TWO RAILS BETWEEN EACH PANEL AND FRAME AS SHOWN ABOVE.

GROUND CABLE MUST BE PLACED BETWEEN GROUNDING STUD AT THE DOOR, AND CABINET CHASSIS (USE 5/16 SELF-THREADED BOLT)

REVDESC	REVNUM	REVBY	DRAWN BY:	DATE
REVDESC	REVNUM	REVBY	KIMBERLY	5/19/10
REVDESC2	REVNUM2	REVBY2	CHECKED BY:	DATE
REVDESC3	REVNUM3	REVBY3	ANT	5/19/10
REVDESC4	REVNUM4	REVBY4	APPROVED BY:	DATE
			ANT	5/19/10

THIS MATERIAL IS THE EXCLUSIVE PROPERTY OF TOSHIBA INTERNATIONAL CORPORATION AND SHALL NOT BE REPRODUCED, USED OR DISCLOSED TO OTHERS UNLESS PRIOR WRITTEN AUTHORIZATION IS OBTAINED.

TITLE: 2TS5 BATTERY SYSTEM (480VDC) FEATURING POWER BATTERIES  
 SERIAL#Q-0810

TOSHIBA INTERNATIONAL CORPORATION  
 13131 WEST LITTLE YORK ROAD, HOUSTON, TX, 77041 U.S.A.

SCALE	ORDER NO.
SCALE	ORDERNUM
DRAWING NO.	OF TOTALSHTS
DWGNUM	SH.SHTNUM