

# SYSTEM SPECIFICATIONS

3TS5 BATTERY SYSTEM (480VDC) FEATURING POWER BATTERIES  
 SYSTEM RATING: XXX KWb FOR XX MINUTES TO 1.67 V.P.C.  
 RECOMMENDED SYSTEM FLOAT VOLTAGE: 544.8 MIN. 552 MAX.  
 SYSTEM CUTOFF VOLTAGE: 400.8  
 FULL LOAD CURRENT: XXX AMPS  
 FULL LOAD CURRENT PER SERIES CIRCUIT: XXX AMPS  
 OPEN CIRCUIT VOLTAGE: 496 - 516 VDC

## INSTALLATION AND MAINTENANCE

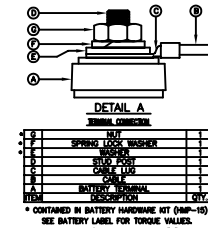
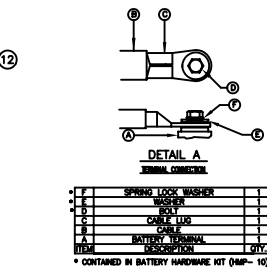
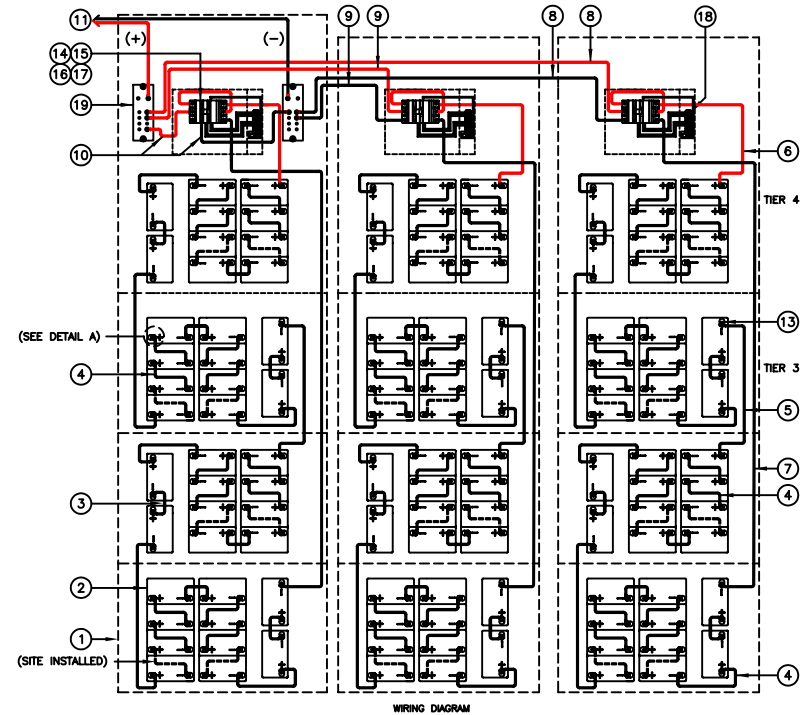
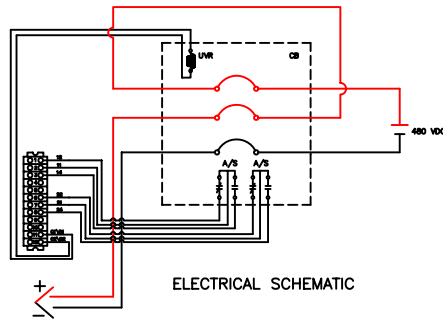
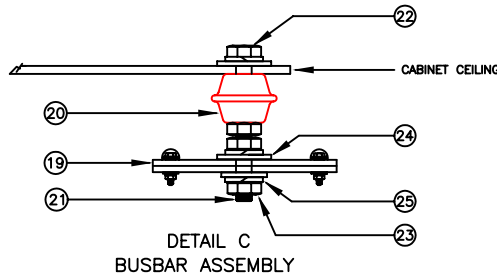
**CAUTION: REFER TO INSTALLATION INSTRUCTIONS (IIS-1) PRIOR TO INSTALLING CABINET.**

- ① ALL RECOMMENDED CUSTOMER'S CABLE GAUGES ARE BASED ON TABLE 310-16 OF N.E.C. USING 75°C CABLE IN 30°C AMBIENT.
- ② INTERNAL BREAKER IS FOR OVERCURRENT PROTECTION ONLY.
- ③ BREAKER LUG MOUNTING TORQUE VALUE: XXX IN-LBS  
 BREAKER WIRE LUG TORQUE VALUE: XXX IN-LBS  
 FUSE LUG MOUNTING TORQUE VALUE: N/A
- ④ USE INSULATED TOOLS FOR CABINET INSTALLATION. DO NOT ALLOW TOOLS OR CABLES TO REST ON BATTERIES.

**IMPORTANT NOTE**  
 ALL CONNECTIONS TO BE RETORQUED ANNUALLY.  
 ALL CONNECTIONS MUST BE CHECKED FOR PROPER TORQUE PRIOR TO START UP OR ENERGIZING OF SYSTEM.

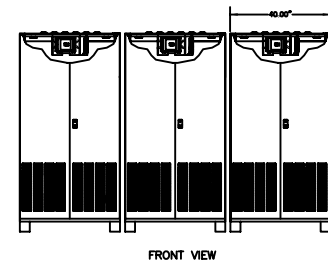
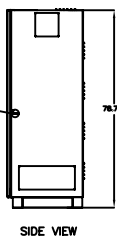
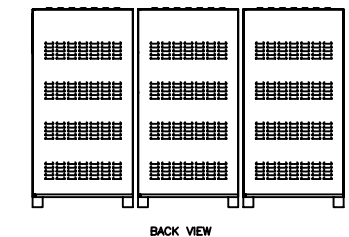
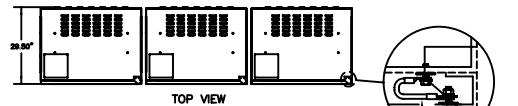
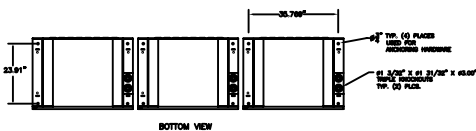
### IMPORTANT NOTE

- \*\*\*THE CUSTOMER AND/OR CONTRACTOR SHALL BE RESPONSIBLE FOR INSTALLING THIS EQUIPMENT IN ACCORDANCE WITH ALL APPLICABLE CODES AND REGULATIONS
- \*\*\*WHEN HANDLING, KEEP UPRIGHT WITHIN +/- 15 DEGREES.



**\*\* CABINET COLOR: TOSHIBA WHITE FOR GROUNDING TOSHIBA BLACK FOR 09000**

NO.	DESCRIPTION	QTY.	PART NO.
1	BATTERY END INSULATION	3	1W-0008
2	5/16" FLAT WASHER	15	1W-0009
3	5/16" X 1/8" HEX NUT	15	1W-0010
4	5/16" X 1/8" UNF X 3/8" HEX HEAD BUSHING	4	1W-0008
5	5/16" X 1/8" UNF X 1/2" HEX HEAD BUSHING	4	1W-0008
6	5/16" X 1/8" UNF X 3/4" HEX HEAD BUSHING	4	1W-0008
7	5/16" X 1/8" UNF X 1" HEX HEAD BUSHING	4	1W-0008
8	5/16" X 1/8" UNF X 1 1/4" HEX HEAD BUSHING	4	1W-0008
9	5/16" X 1/8" UNF X 1 3/4" HEX HEAD BUSHING	4	1W-0008
10	5/16" X 1/8" UNF X 2" HEX HEAD BUSHING	4	1W-0008
11	BUSBAR (TYPE F 2)	2	1W0001-0003
12	TERMINAL BLOCK (DT11212)	2	1W-0011
13	CABLE LUG KIT	3	1W-0012
14	TERMINAL BLOCK (DT11212)	2	1W-0011
15	ALUMINUM SWITCH	3	1W-0013
16	ALUMINUM SWITCH	3	1W-0013
17	ALUMINUM SWITCH	3	1W-0013
18	ALUMINUM SWITCH	3	1W-0013
19	ALUMINUM SWITCH	3	1W-0013
20	ALUMINUM SWITCH	3	1W-0013
21	ALUMINUM SWITCH	3	1W-0013
22	ALUMINUM SWITCH	3	1W-0013
23	ALUMINUM SWITCH	3	1W-0013
24	ALUMINUM SWITCH	3	1W-0013
25	ALUMINUM SWITCH	3	1W-0013
26	ALUMINUM SWITCH	3	1W-0013
27	ALUMINUM SWITCH	3	1W-0013
28	ALUMINUM SWITCH	3	1W-0013
29	ALUMINUM SWITCH	3	1W-0013
30	ALUMINUM SWITCH	3	1W-0013
31	ALUMINUM SWITCH	3	1W-0013
32	ALUMINUM SWITCH	3	1W-0013
33	ALUMINUM SWITCH	3	1W-0013
34	ALUMINUM SWITCH	3	1W-0013
35	ALUMINUM SWITCH	3	1W-0013
36	ALUMINUM SWITCH	3	1W-0013
37	ALUMINUM SWITCH	3	1W-0013
38	ALUMINUM SWITCH	3	1W-0013
39	ALUMINUM SWITCH	3	1W-0013
40	ALUMINUM SWITCH	3	1W-0013
41	ALUMINUM SWITCH	3	1W-0013
42	ALUMINUM SWITCH	3	1W-0013
43	ALUMINUM SWITCH	3	1W-0013
44	ALUMINUM SWITCH	3	1W-0013
45	ALUMINUM SWITCH	3	1W-0013
46	ALUMINUM SWITCH	3	1W-0013
47	ALUMINUM SWITCH	3	1W-0013
48	ALUMINUM SWITCH	3	1W-0013
49	ALUMINUM SWITCH	3	1W-0013
50	ALUMINUM SWITCH	3	1W-0013
51	ALUMINUM SWITCH	3	1W-0013
52	ALUMINUM SWITCH	3	1W-0013
53	ALUMINUM SWITCH	3	1W-0013
54	ALUMINUM SWITCH	3	1W-0013
55	ALUMINUM SWITCH	3	1W-0013
56	ALUMINUM SWITCH	3	1W-0013
57	ALUMINUM SWITCH	3	1W-0013
58	ALUMINUM SWITCH	3	1W-0013
59	ALUMINUM SWITCH	3	1W-0013
60	ALUMINUM SWITCH	3	1W-0013
61	ALUMINUM SWITCH	3	1W-0013
62	ALUMINUM SWITCH	3	1W-0013
63	ALUMINUM SWITCH	3	1W-0013
64	ALUMINUM SWITCH	3	1W-0013
65	ALUMINUM SWITCH	3	1W-0013
66	ALUMINUM SWITCH	3	1W-0013
67	ALUMINUM SWITCH	3	1W-0013
68	ALUMINUM SWITCH	3	1W-0013
69	ALUMINUM SWITCH	3	1W-0013
70	ALUMINUM SWITCH	3	1W-0013
71	ALUMINUM SWITCH	3	1W-0013
72	ALUMINUM SWITCH	3	1W-0013
73	ALUMINUM SWITCH	3	1W-0013
74	ALUMINUM SWITCH	3	1W-0013
75	ALUMINUM SWITCH	3	1W-0013
76	ALUMINUM SWITCH	3	1W-0013
77	ALUMINUM SWITCH	3	1W-0013
78	ALUMINUM SWITCH	3	1W-0013
79	ALUMINUM SWITCH	3	1W-0013
80	ALUMINUM SWITCH	3	1W-0013
81	ALUMINUM SWITCH	3	1W-0013
82	ALUMINUM SWITCH	3	1W-0013
83	ALUMINUM SWITCH	3	1W-0013
84	ALUMINUM SWITCH	3	1W-0013
85	ALUMINUM SWITCH	3	1W-0013
86	ALUMINUM SWITCH	3	1W-0013
87	ALUMINUM SWITCH	3	1W-0013
88	ALUMINUM SWITCH	3	1W-0013
89	ALUMINUM SWITCH	3	1W-0013
90	ALUMINUM SWITCH	3	1W-0013
91	ALUMINUM SWITCH	3	1W-0013
92	ALUMINUM SWITCH	3	1W-0013
93	ALUMINUM SWITCH	3	1W-0013
94	ALUMINUM SWITCH	3	1W-0013
95	ALUMINUM SWITCH	3	1W-0013
96	ALUMINUM SWITCH	3	1W-0013
97	ALUMINUM SWITCH	3	1W-0013
98	ALUMINUM SWITCH	3	1W-0013
99	ALUMINUM SWITCH	3	1W-0013
100	ALUMINUM SWITCH	3	1W-0013



REVDESC	REVNUM	REVBY	DRAWN BY:	DATE
REVDESC	REVNUM	REVBY	KIMBERLY	5/19/10
REVDESC2	REVNUM2	REVBY2	CHECKED BY:	DATE
REVDESC3	REVNUM3	REVBY3	ANT	5/19/10
REVDESC4	REVNUM4	REVBY4	APPROVED BY:	DATE
			ANT	5/19/10

THIS MATERIAL IS THE EXCLUSIVE PROPERTY OF TOSHIBA INTERNATIONAL CORPORATION AND SHALL NOT BE REPRODUCED, USED OR DISCLOSED TO OTHERS UNLESS PRIOR WRITTEN AUTHORIZATION IS OBTAINED.

TITLE: 3TS5 BATTERY SYSTEM (480VDC) FEATURING POWER BATTERIES  
 SERIAL# Q-0809

SCALE	ORDER NO.
SCALE	ORDERNUM
DRAWING NO.	SH.SHTNUM
DWGNUM	OF TOTALSHTS

TOSHIBA INTERNATIONAL CORPORATION  
 13131 WEST LITTLE YORK ROAD, HOUSTON, TX, 77041 U.S.A.