

SYSTEM SPECIFICATIONS

4TS5 BATTERY SYSTEM (480VDC) FEATURING POWER BATTERIES
 SYSTEM RATING: XXX KWB FOR XX MINUTES TO 1.67 V.P.C.
 RECOMMENDED SYSTEM FLOAT VOLTAGE: 544.8 MIN. 552 MAX.
 SYSTEM CUTOFF VOLTAGE: 400.8
 FULL LOAD CURRENT: XXX AMPS
 FULL LOAD CURRENT PER SERIES CIRCUIT: XXX AMPS
 OPEN CIRCUIT VOLTAGE: 496 - 516 VDC

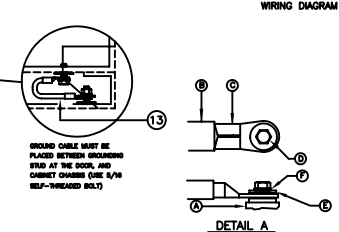
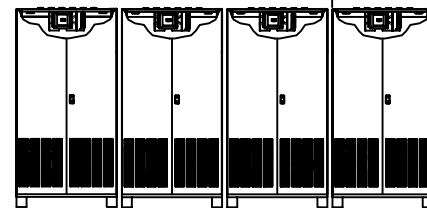
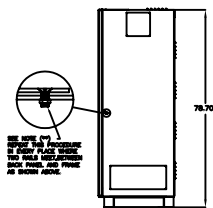
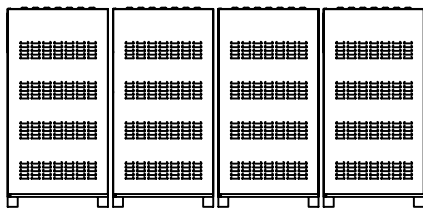
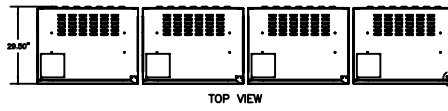
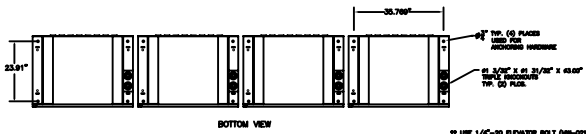
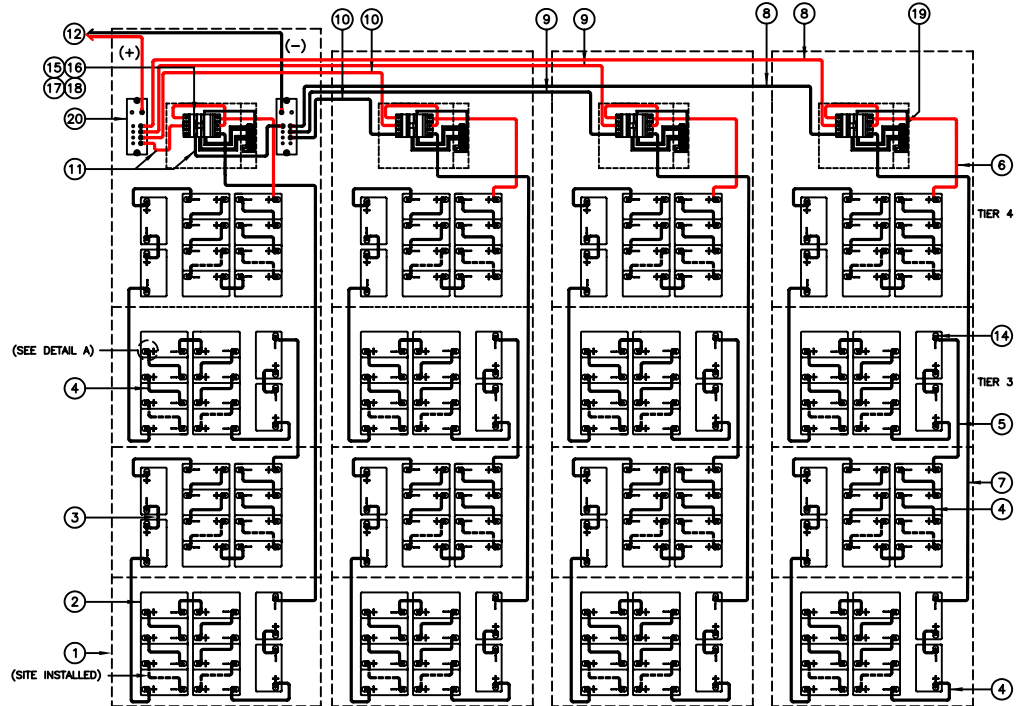
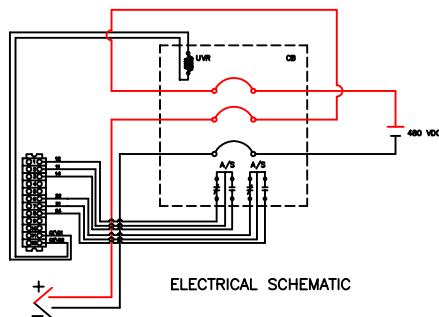
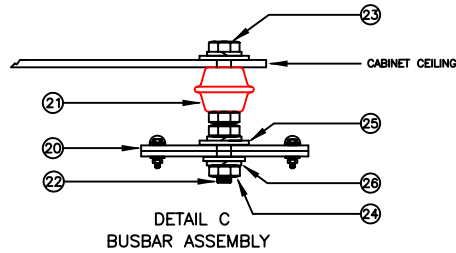
INSTALLATION AND MAINTENANCE

CAUTION: REFER TO INSTALLATION INSTRUCTIONS (IIS-1) PRIOR TO INSTALLING CABINET.

- ① ALL RECOMMENDED CUSTOMER'S CABLE GAUGES ARE BASED ON TABLE 310-16 OF N.E.C. USING 75°C CABLE IN 30°C AMBIENT.
- ② INTERNAL BREAKER IS FOR OVERCURRENT PROTECTION ONLY.
- ③ BREAKER LUG MOUNTING TORQUE VALUE: XXX IN-LBS
 BREAKER WIRE LUG TORQUE VALUE: XXX IN-LBS
 FUSE LUG MOUNTING TORQUE VALUE: N/A
- ④ USE INSULATED TOOLS FOR CABINET INSTALLATION. DO NOT ALLOW TOOLS OR CABLES TO REST ON BATTERIES.

IMPORTANT NOTE
 ALL CONNECTIONS TO BE RETIGHTENED ANNUALLY.
 ALL CONNECTIONS MUST BE CHECKED FOR PROPER TORQUE PRIOR TO START UP OR ENERGIZING OF SYSTEM.

- IMPORTANT NOTE**
 ***THE CUSTOMER AND/OR CONTRACTOR SHALL BE RESPONSIBLE FOR INSTALLING THIS EQUIPMENT IN ACCORDANCE WITH ALL APPLICABLE CODES AND REGULATIONS
 ***WHEN HANDLING, KEEP UPRIGHT WITHIN +/- 15 DEGREES.



ITEM	DESCRIPTION	QTY.
1	SPRING LOCK WASHER	1
2	BATTERY TERMINAL INSULATION	1

ITEM	DESCRIPTION	QTY.
1	SPRING LOCK WASHER	1
2	BATTERY TERMINAL INSULATION	1

** CABINET COLOR: TOSHIBA LIGHT WHITE FOR G5000MM TOSHIBA BLACK FOR G5000

ITEM	DESCRIPTION	QTY.	PART NO.
27	BATTERY RAIL INSULATION	48	HW-0008
28	5/16" LOCK WASHER	4	HW-0008
29	5/16" FLAT WASHER	4	HW-0008
30	5/16"-18 UNC HEX NUT	12	HW-0007
31	5/16"-18 UNC x 5/8" HEX HEAD SCREW	4	HW-0008
32	5/16"-18 UNC x 1" FULLY THREADED STUD	4	HW-0008
33	5/16"-18 STAINLESS	4	OC-0002
34	BUSBAR (19IN x 2)	4	NUM823-0003
35	TERMINAL BLOCK (67/192/212)	4	TS-0076
36	CABLE LUG KIT	4	XXX
37	24V UNDERVOLTAGE RELEASE	4	XXX
38	AUXILIARY SWITCH	4	XXX
39	CIRCUIT BREAKER 500 VDC XXX A	4	XXX
40	BATTERY HARDWARE KIT	160	SEE DETAIL A
41	CABLE (GROUND) 12 GA. 25' LG.	4	T-208
42	CABLE (THICK RAIL) 100 UCM MINIMUM 2x3 SPLIT W. COVER	2	XXX-33E
43	CABLE 12 GA. 30' LG.	2	XXX-33E
44	CABLE 12 GA. 60' LG.	2	XXX-33E
45	CABLE 12 GA. 120' LG.	2	XXX-120E
46	CABLE 12 GA. 180' LG.	2	XXX-180E
47	CABLE 12 GA. 240' LG.	2	XXX-240E
48	CABLE 12 GA. 300' LG.	2	XXX-300E
49	CABLE 12 GA. 360' LG.	2	XXX-360E
50	CABLE 12 GA. 420' LG.	2	XXX-420E
51	CABLE 12 GA. 480' LG.	2	XXX-480E
52	CABLE 12 GA. 540' LG.	2	XXX-540E
53	CABLE 12 GA. 600' LG.	2	XXX-600E
54	CABLE 12 GA. 660' LG.	2	XXX-660E
55	CABLE 12 GA. 720' LG.	2	XXX-720E
56	CABLE 12 GA. 780' LG.	2	XXX-780E
57	CABLE 12 GA. 840' LG.	2	XXX-840E
58	CABLE 12 GA. 900' LG.	2	XXX-900E
59	CABLE 12 GA. 960' LG.	2	XXX-960E
60	CABLE 12 GA. 1020' LG.	2	XXX-1020E
61	CABLE 12 GA. 1080' LG.	2	XXX-1080E
62	CABLE 12 GA. 1140' LG.	2	XXX-1140E
63	CABLE 12 GA. 1200' LG.	2	XXX-1200E
64	BATTERY	160	TC-122000
65	CABINET	4	TS5

REVDESC	REVNUM	REVBY	DRAWN BY: KIMBERLY	DATE 5/19/10	THIS MATERIAL IS THE EXCLUSIVE PROPERTY OF TOSHIBA INTERNATIONAL CORPORATION AND SHALL NOT BE REPRODUCED, USED OR DISCLOSED TO OTHERS UNLESS PRIOR WRITTEN AUTHORIZATION IS OBTAINED.	TITLE: 4TS5 BATTERY SYSTEM (480VDC) FEATURING POWER BATTERIES	SERIAL#Q-0808	SCALE	ORDER NO.
REVDESC2	REVNUM2	REVBY2	CHECKED BY: ANT	DATE 5/19/10				SCALE	ORDERNUM
REVDESC3	REVNUM3	REVBY3	APPROVED BY: ANT	DATE 5/19/10				DRAWING NO.	
REVDESC4	REVNUM4	REVBY4						DWGNUM	SH.SHTNUM OF TOTALSHTS
TOSHIBA INTERNATIONAL CORPORATION 13131 WEST LITTLE YORK ROAD, HOUSTON, TX, 77041 U.S.A.									