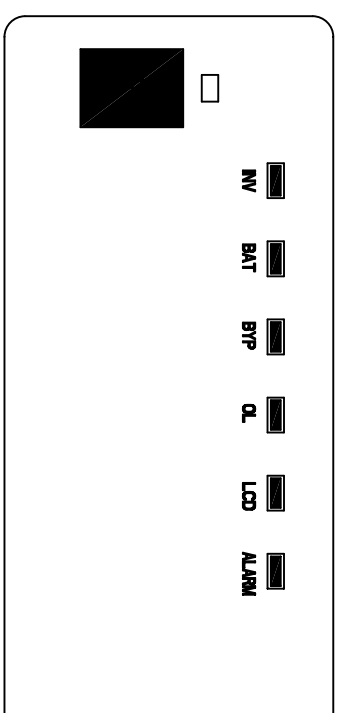
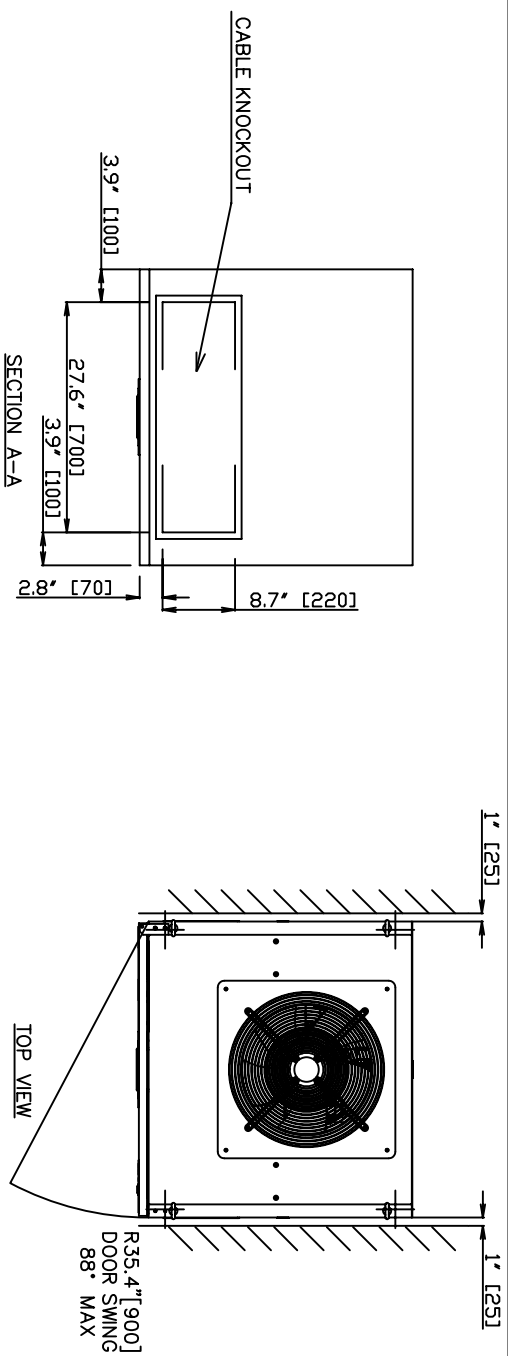


<p>NOTES</p> <p>1) This drawing is for illustration purposes only and is subject to change without notice. TIC is not responsible for any errors or omissions.</p>	<p>Drawn by EKM Date 11/04/08 Approved by</p>	<p align="center">TOSHIBA INTERNATIONAL CORPORATION Houston Texas, USA</p> <p>THIS MATERIAL IS THE EXCLUSIVE PROPERTY OF TOSHIBA INTERNATIONAL CORPORATION AND SHALL NOT BE REPRODUCED, USED, OR DISCLOSED TO OTHERS UNLESS PRIOR WRITTEN AUTHORIZATION IS OBTAINED.</p>	<p>TITLE</p> <p align="center">One-Line Diagram 225 kVA G9000 Series UPS 480V Single Input, 480V Output</p> <hr/> <p>DRAWING NO. T90S3S22KS6XSN</p> <p>REV. 0.0</p>
---	---	---	--

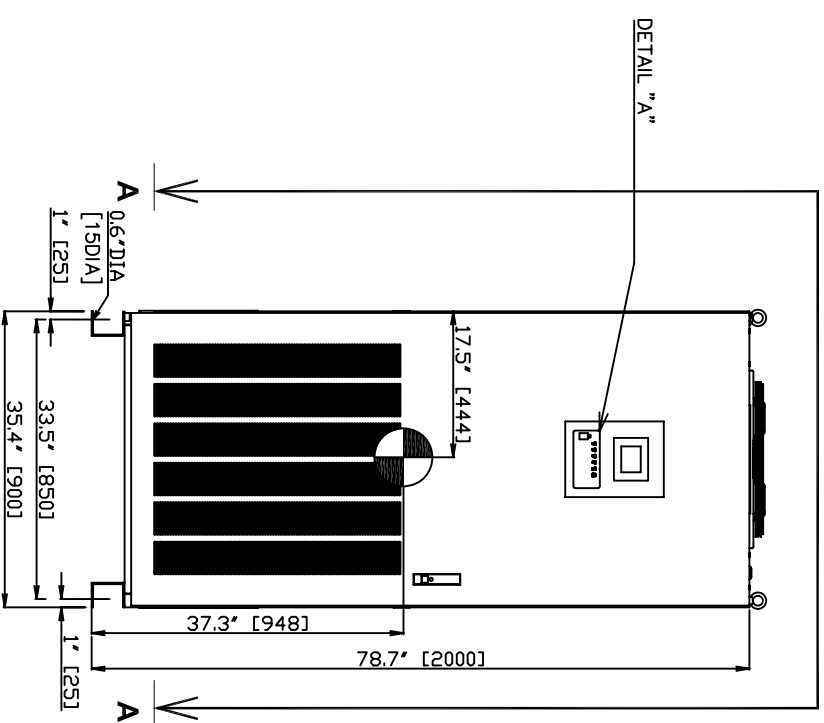


NOTES

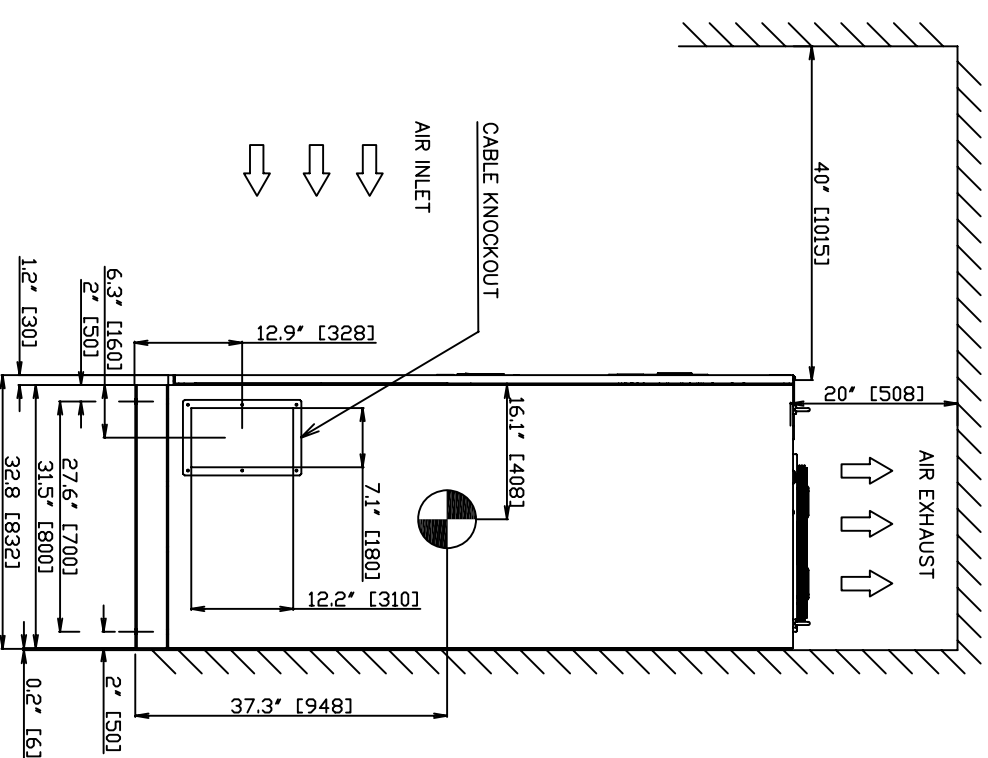
1. DIMENSIONS ARE SHOWN IN INCHES (MILLIMETERS IN BRACKETS[]).
2. SIDE CLEARANCE OF 1" [25] IS NOT REQUIRED WITH CABINETS INSTALLED SIDE-BY-SIDE.
3. CABINET SHOULD BE MAINTAINED UPRIGHT WITHIN ±15° DURING MOVING.

TYPE : T90MS3S22KS6XSN
 RATING : 225KVA-3P3W-480V-60HZ
 APPROX. WEIGHT : 1,230LBS (558kg)
 HEAT REJECTION : 27.3 KBTUs/hour

FRONT VIEW



SIDE VIEW



THIS MATERIAL IS THE EXCLUSIVE PROPERTY OF TOSHIBA INTERNATIONAL CORPORATION AND SHALL NOT BE REPRODUCED, USED OR DISCLOSED TO OTHERS UNLESS PRIOR WRITTEN AUTHORIZATION IS OBTAINED.

FOR QUOTE	Q0	JBT	DRAWN BY:	JBT	DATE	10/2/08
			CHECKED BY:		DATE	
			APPROVED BY:		DATE	

TITLE: G9000 225KVA UPS MODULE
 DUTLINE & INSTALLATION DRAWING

SCALE: NTS
 ORDER NO.

TOSHIBA INTERNATIONAL CORPORATION
 13131 WEST LITTLE YORK ROAD, HOUSTON, TX, 77041 U.S.A.
 DRAWING NO. 922441CDL0810JBT-MKTG
 SH.1 OF 1