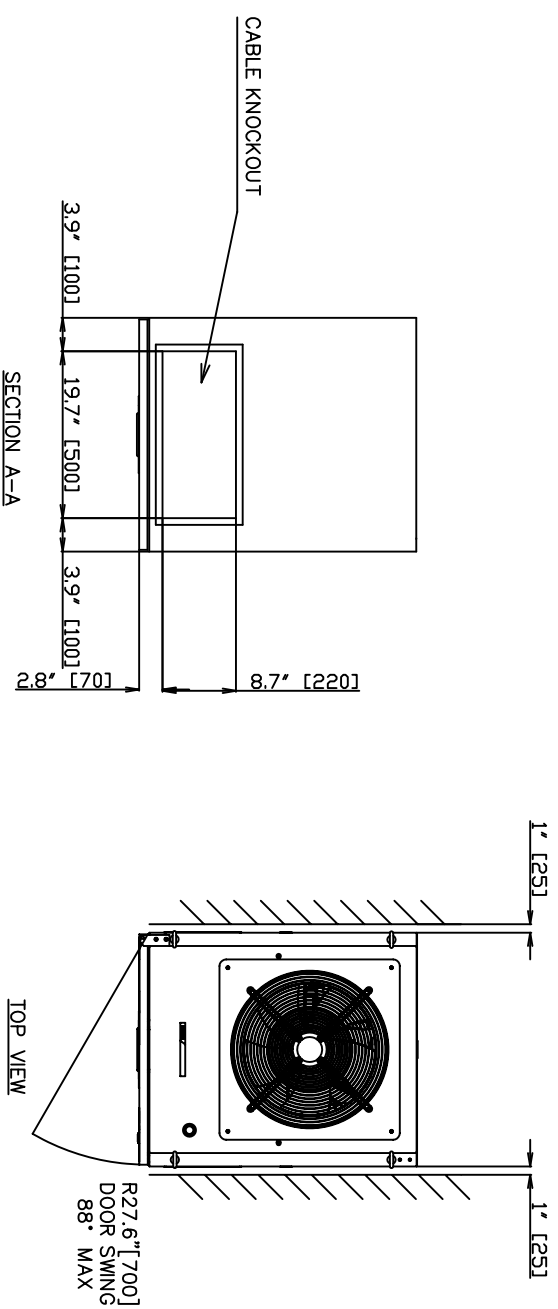
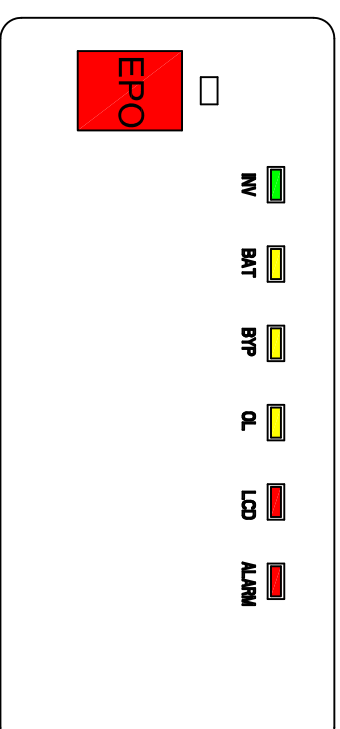
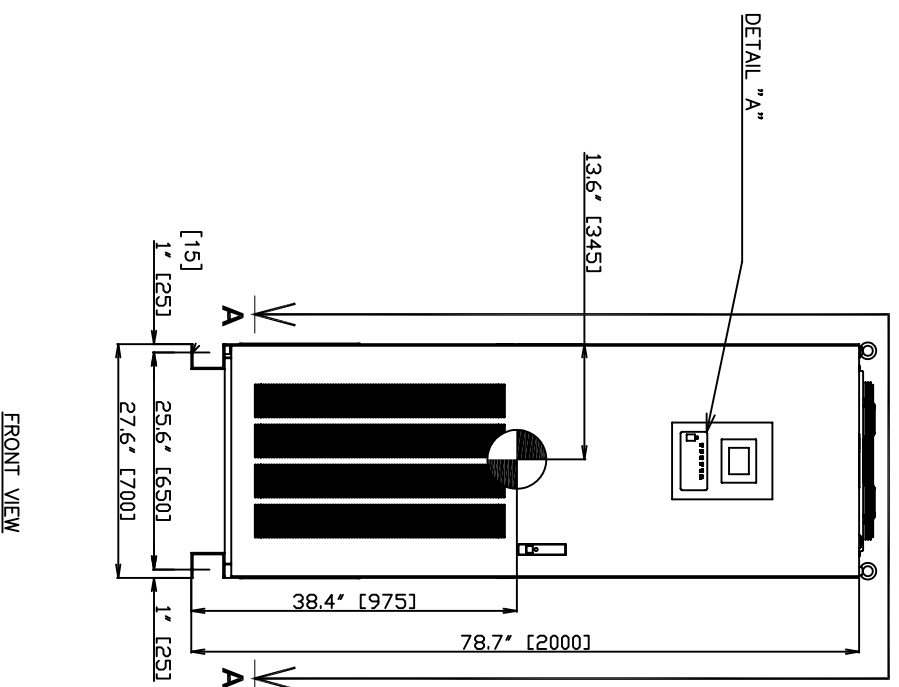


<p>NOTES</p> <p>1) This drawing is for illustration purposes only and is subject to change without notice. TIC is not responsible for any errors or omissions.</p>	<p>Drawn by EKM Date 11/04/08 Approved by</p>	<p align="center">TOSHIBA INTERNATIONAL CORPORATION Houston Texas, USA</p> <p align="center">THIS MATERIAL IS THE EXCLUSIVE PROPERTY OF TOSHIBA INTERNATIONAL CORPORATION AND SHALL NOT BE REPRODUCED, USED, OR DISCLOSED TO OTHERS UNLESS PRIOR WRITTEN AUTHORIZATION IS OBTAINED.</p>	<p>TITLE</p> <p align="center">One-Line Diagram 80 kVA G9000 Series UPS 480V Single Input, 480V Output</p> <hr/> <p>DRAWING NO. T90S3S08KS6XSN</p> <p>REV. 0.0</p>
---	---	--	---



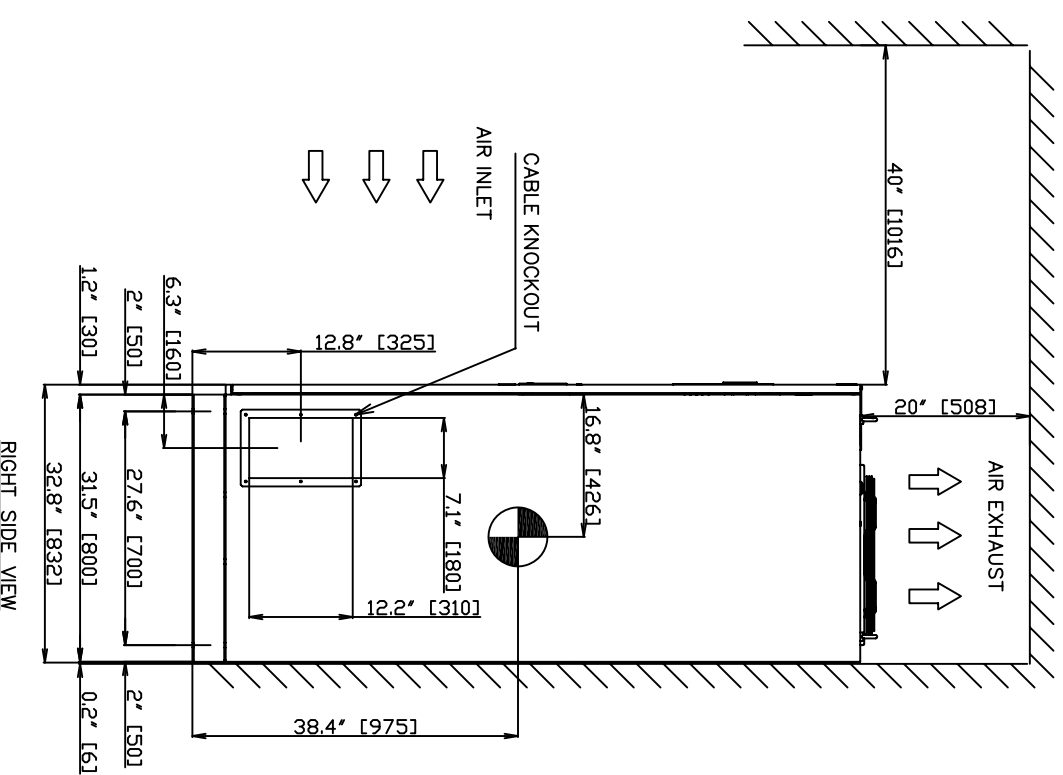
TYPE : T90S3S08KS6XSXN
 RATING : 80KVA-3P3W-480V-60HZ
 APPROX. WEIGHT : 855LBS (388kg)
 HEAT REJECTION : 11.3 KBTUs/hour



NOTES

1. DIMENSIONS ARE SHOWN IN INCHES (MILLIMETERS IN BRACKETS []).
2. SIDE CLEARANCE OF 1" [25] IS NOT REQUIRED WITH CABINETS INSTALLED SIDE-BY-SIDE.
3. CABINET SHOULD BE MAINTAINED UPRIGHT WITHIN ±15° DURING MOVING.

DETAIL "A"



FOR QUOTE

Q0

DRAWN BY: JBT
 DATE: 11/12/08

CHECKED BY: []
 DATE: []

APPROVED BY: []
 DATE: []

THIS MATERIAL IS THE EXCLUSIVE PROPERTY OF TOSHIBA INTERNATIONAL CORPORATION AND SHALL NOT BE REPRODUCED, USED OR DISCLOSED TO OTHERS UNLESS PRIOR WRITTEN AUTHORIZATION IS OBTAINED.

TITLE: G9000 80KVA UPS MODULE OUTLINE & INSTALLATION DRAWING

SCALE: NTS

ORDER NO. []

TOSHIBA INTERNATIONAL CORPORATION
 13131 WEST LITTLE YORK ROAD, HOUSTON, TX, 77041 U.S.A.

DRAWING NO. 908441CDL0811JBT-MKTG

SH.1
 DF.1