

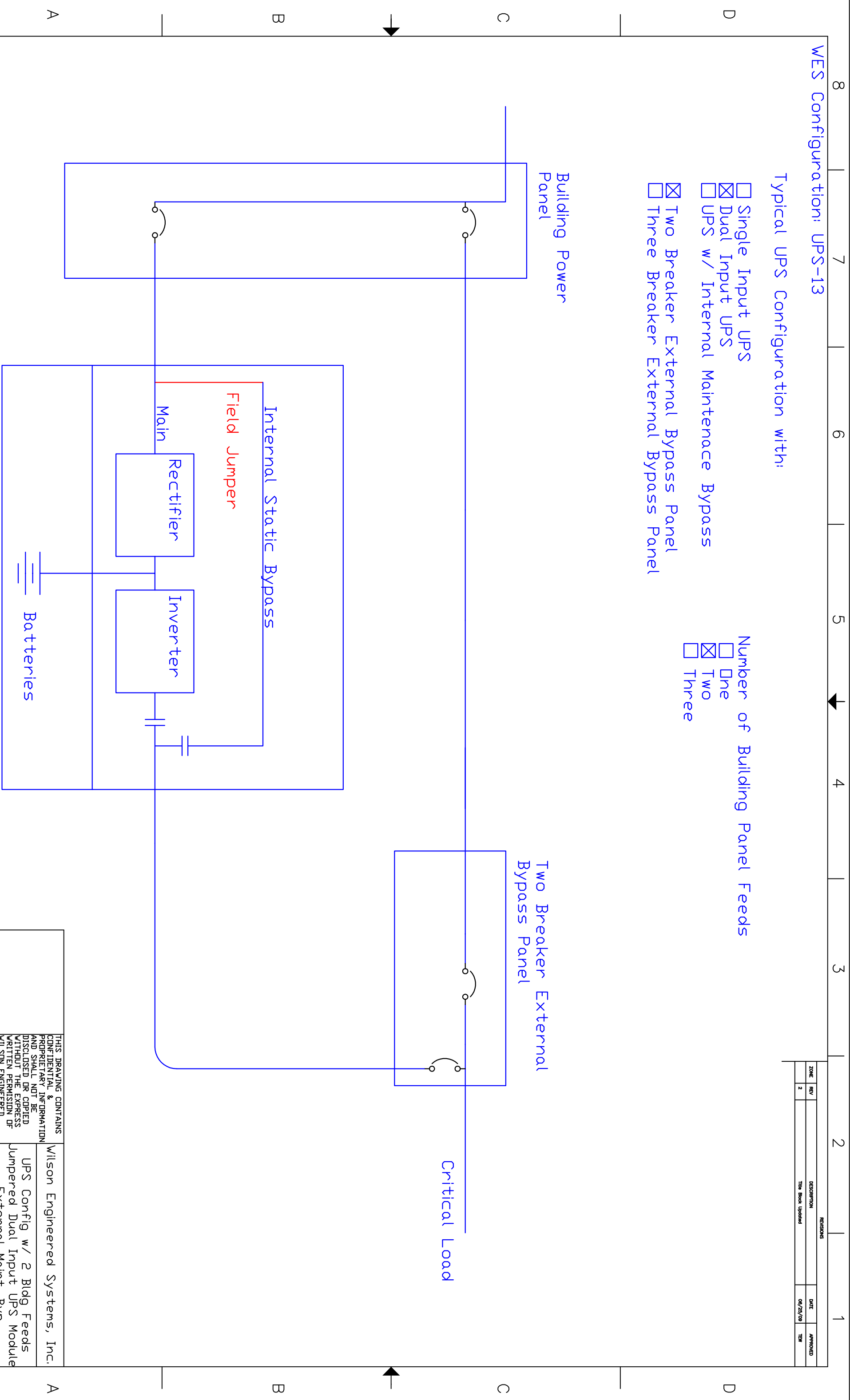
WES Configuration: UPS-13

Typical UPS Configuration with:

- Single Input UPS
- Dual Input UPS
- UPS w/ Internal Maintenance Bypass
- Two Breaker External Bypass Panel
- Three Breaker External Bypass Panel

Number of Building Panel Feeds

- One
- Two
- Three



REVISIONS			
NO.	REV.	DESCRIPTION	DATE
2		Title Block Updated	06/25/09
			APPROVED
			TEN

THIS DRAWING CONTAINS CONFIDENTIAL & PROPRIETARY INFORMATION AND SHALL NOT BE DISCLOSED OR COPIED WITHOUT THE EXPRESS WRITTEN PERMISSION OF WILSON ENGINEERED SYSTEMS, INC.

Wilson Engineered Systems, Inc.
 UPS Config w/ 2 Bldg Feeds
 Jumpered Dual Input UPS Module
 External Maint. Byp.

SIZE	PROJECT NO.	DWG NO.	REV
D	----	std-1013	2
STATUS FOR INFORMATION ONLY NOT FOR CONSTRUCTION			SHEET
			2