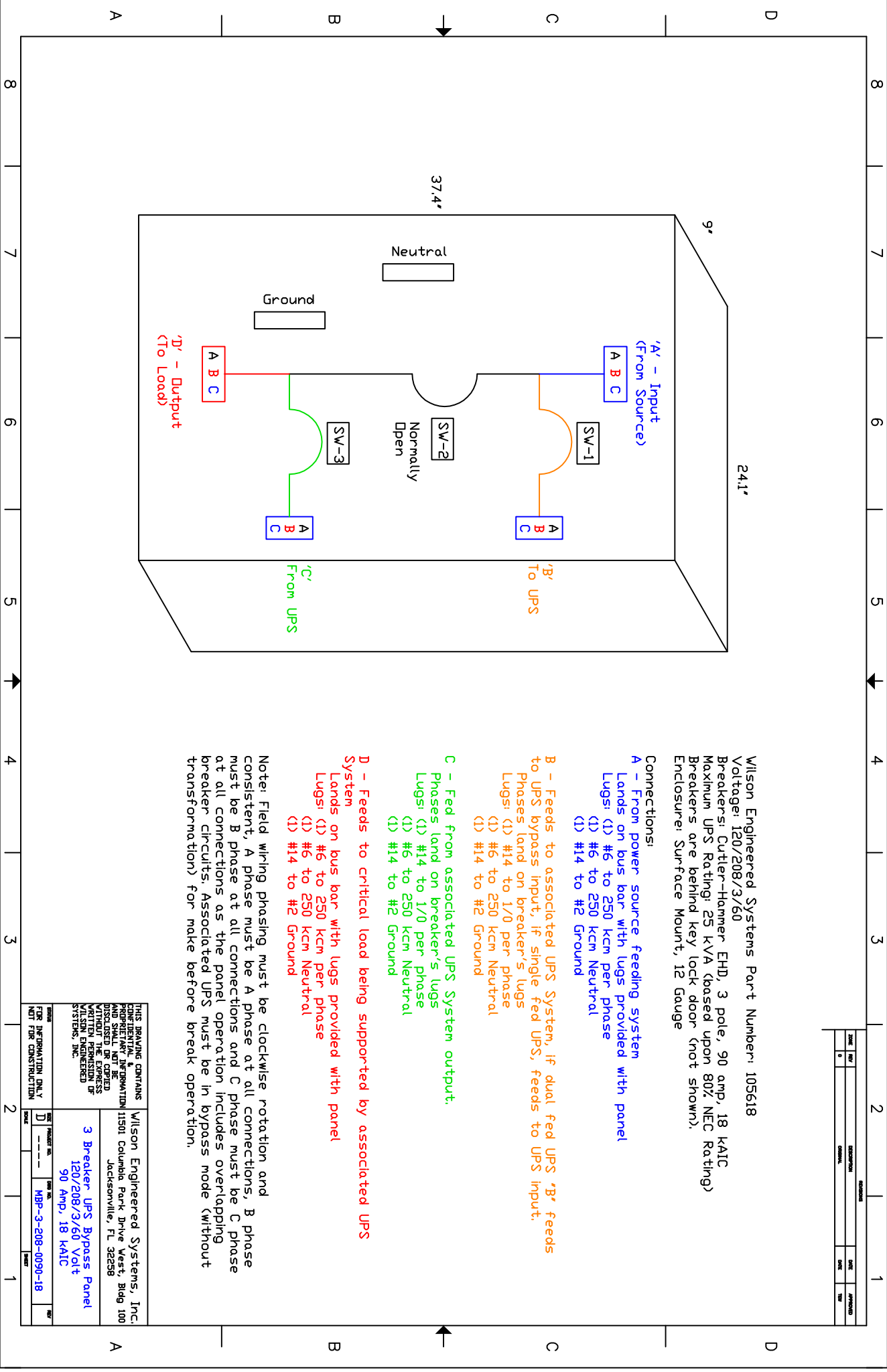


DATE	BY	DESCRIPTION	DATE	BY



Wilson Engineered Systems Part Number: 105618  
 Voltage: 120/208/3/60

Breakers: Cutler-Hammer EHD, 3 pole, 90 amp, 18 KAIC  
 Maximum UPS Rating: 25 KVA (based upon 80% NEC Rating)  
 Breakers are behind key lock door (not shown).  
 Enclosure: Surface Mount, 12 Gauge

**Connections:**

**A - From power source feeding system**  
 Lands on bus bar with lugs provided with panel  
 Lugs: (1) #6 to 250 kcm per phase  
 (1) #6 to 250 kcm Neutral  
 (1) #14 to #2 Ground

**B - Feeds to associated UPS System, if dual fed UPS 'B' feeds to UPS bypass input, if single fed UPS, feeds to UPS input.**  
 Phases land on breaker's lugs  
 Lugs: (1) #14 to 1/0 per phase  
 (1) #6 to 250 kcm Neutral  
 (1) #14 to #2 Ground

**C - Feed from associated UPS System output.**  
 Phases land on breaker's lugs  
 Lugs: (1) #14 to 1/0 per phase  
 (1) #6 to 250 kcm Neutral  
 (1) #14 to #2 Ground

**D - Feeds to critical load being supported by associated UPS System**  
 Lands on bus bar with lugs provided with panel  
 Lugs: (1) #6 to 250 kcm per phase  
 (1) #6 to 250 kcm Neutral  
 (1) #14 to #2 Ground

Note: Field wiring phasing must be clockwise rotation and consistent, A phase at all connections, B phase must be B phase at all connections and C phase must be C phase at all connections as the panel operation includes overlapping breaker circuits. Associated UPS must be in bypass mode (without transformation) for make before break operation.

THIS DRAWING CONTAINS  
 CONFIDENTIAL & PROPRIETARY INFORMATION  
 AND SHALL NOT BE REPRODUCED OR  
 TRANSMITTED IN ANY FORM OR BY ANY  
 MEANS, WITHOUT THE EXPRESS  
 WRITTEN PERMISSION OF  
 WILSON ENGINEERED  
 SYSTEMS, INC.

Wilson Engineered Systems, Inc.  
 11501 Columbia Park Drive West, Bldg 100  
 Jacksonville, FL 32258

3 Breaker UPS Bypass Panel  
 120/208/3/60 Volt  
 90 Amp, 18 KAIC

PROJECT NO. MBR-3-208-0090-18