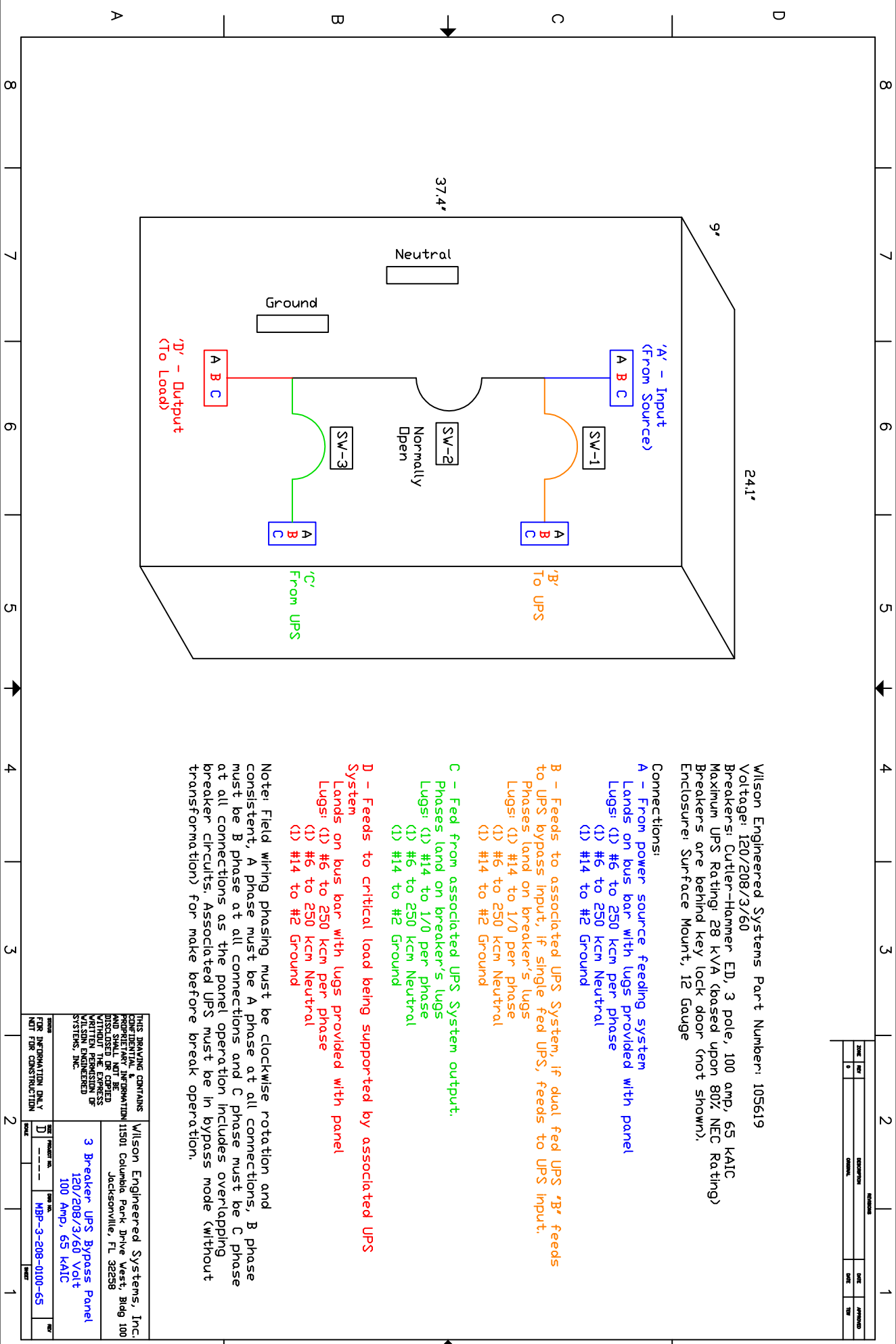


DATE	BY	DESCRIPTION	DATE	BY	APPROVED



Wilson Engineered Systems Part Number: 105619  
Voltage: 120/208/3/60

Breakers: Cutler-Hammer ED, 3 pole, 100 amp, 65 KAIC  
Maximum UPS Rating: 28 kVA (based upon 80% NEC Rating)

Breakers are behind key lock door (not shown).  
Enclosure: Surface Mount, 12 Gauge

**Connections:**

**A - From power source feeding system**  
Lands on bus bar with lugs provided with panel

Lugs: (1) #6 to 250 kcm per phase  
(1) #6 to 250 kcm Neutral  
(1) #14 to #2 Ground

**B - Feeds to associated UPS System, if dual fed UPS 'B' feeds to UPS bypass input, if single fed UPS, feeds to UPS input.**

Phases land on breaker's lugs  
Lugs: (1) #14 to 1/0 per phase  
(1) #6 to 250 kcm Neutral  
(1) #14 to #2 Ground

**C - Feed from associated UPS System output.**

Phases land on breaker's lugs  
Lugs: (1) #14 to 1/0 per phase  
(1) #6 to 250 kcm Neutral  
(1) #14 to #2 Ground

**D - Feeds to critical load being supported by associated UPS System**

Lands on bus bar with lugs provided with panel  
Lugs: (1) #6 to 250 kcm per phase  
(1) #6 to 250 kcm Neutral  
(1) #14 to #2 Ground

Note: Field wiring phasing must be clockwise rotation and consistent, A phase at all connections, B phase must be B phase at all connections and C phase must be C phase at all connections as the panel operation includes overlapping breaker circuits. Associated UPS must be in bypass mode (without transformation) for make before break operation.

THIS DRAWING CONTAINS CONFIDENTIAL & PROPRIETARY INFORMATION AND SHALL NOT BE REPRODUCED, COPIED, OR TRANSMITTED IN ANY FORM WITHOUT THE EXPRESS WRITTEN PERMISSION OF WILSON ENGINEERED SYSTEMS, INC.		Wilson Engineered Systems, Inc. 11501 Columbia Park Drive West, Bldg 100 Jacksonville, FL 32258	
3 Breaker UPS Bypass Panel 120/208/3/60 Volt 100 Amp, 65 KAIC		PROJECT NO. MBP-3-208-0100-65	DATE 

8 7 6 5 4 3 2 1