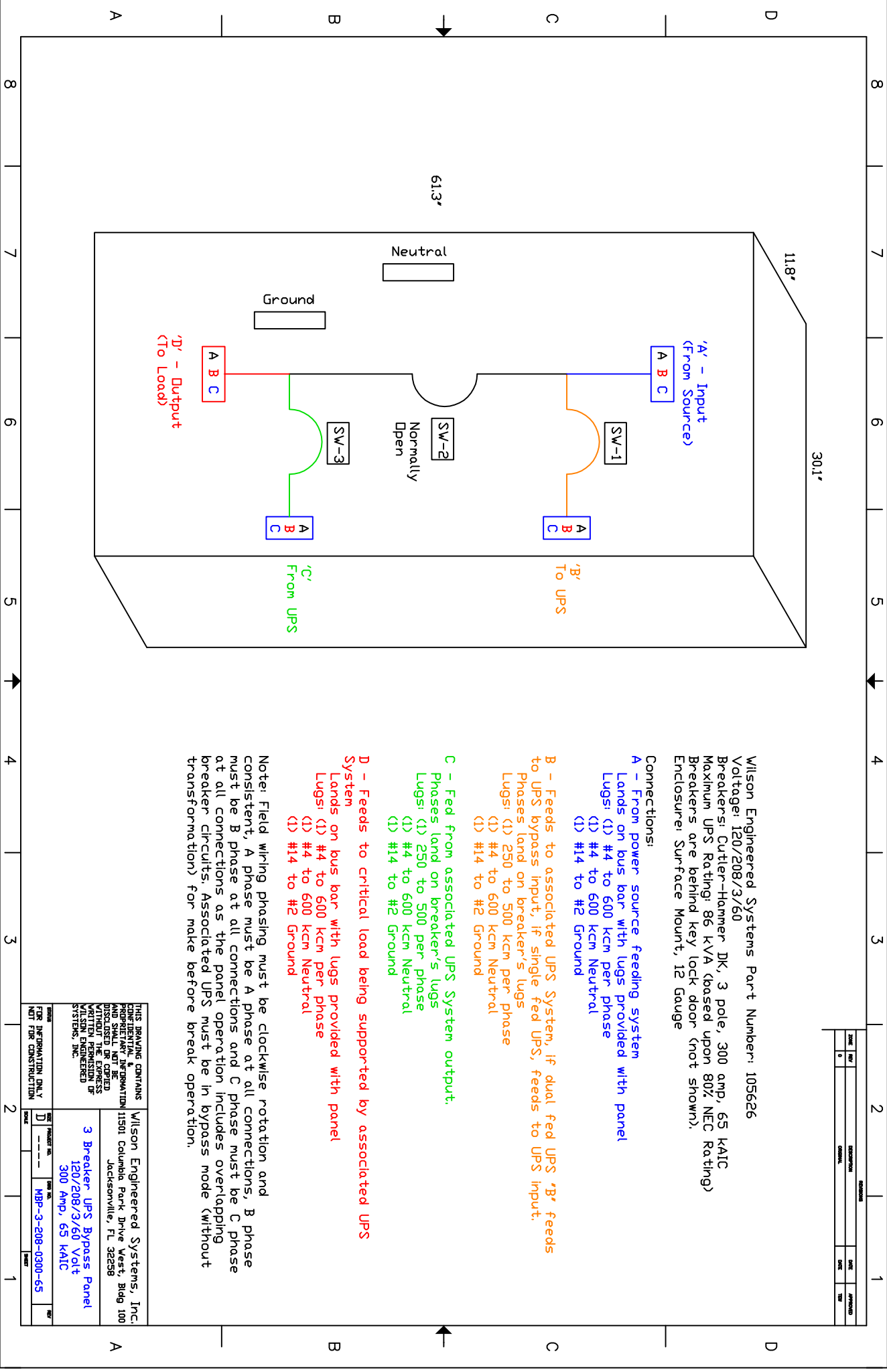


DATE	BY	DESCRIPTION	DATE	BY



Wilson Engineered Systems Part Number: 105626
 Voltage: 120/208/3/60
 Breakers: Cutler-Hammer DK, 3 pole, 300 amp, 65 KAIC
 Maximum UPS Rating: 86 kVA (based upon 80% NEC Rating)
 Breakers are behind key lock door (not shown).
 Enclosure: Surface Mount, 12 Gauge

Connections:

A - From power source feeding system
 Lands on bus bar with lugs provided with panel
 Lugs: (1) #4 to 600 kcm per phase
 (1) #4 to 600 kcm Neutral
 (1) #14 to #2 Ground

B - Feeds to associated UPS System, if dual fed UPS 'B' feeds to UPS bypass input, if single fed UPS, feeds to UPS input.
 Phases land on breaker's lugs
 Lugs: (1) 250 to 500 kcm per phase
 (1) #4 to 600 kcm Neutral
 (1) #14 to #2 Ground

C - Feed from associated UPS System output.
 Phases land on breaker's lugs
 Lugs: (1) 250 to 500 per phase
 (1) #4 to 600 kcm Neutral
 (1) #14 to #2 Ground

D - Feeds to critical load being supported by associated UPS System
 Lands on bus bar with lugs provided with panel
 Lugs: (1) #4 to 600 kcm per phase
 (1) #4 to 600 kcm Neutral
 (1) #14 to #2 Ground

Note: Field wiring phasing must be clockwise rotation and consistent, A phase must be A phase at all connections, B phase must be B phase at all connections and C phase must be C phase at all connections as the panel operation includes overlapping breaker circuits. Associated UPS must be in bypass mode (without transformation) for make before break operation.

THIS DRAWING CONTAINS
 CONFIDENTIAL & PROPRIETARY INFORMATION
 AND SHALL NOT BE REPRODUCED OR TRANSMITTED IN ANY FORM OR BY ANY MEANS, WITHOUT THE EXPRESS WRITTEN PERMISSION OF WILSON ENGINEERED SYSTEMS, INC.

Wilson Engineered Systems, Inc.
 11501 Columbia Park Drive West, Bldg 100
 Jacksonville, FL 32258

3 Breaker UPS Bypass Panel
 120/208/3/60 Volt
 300 Amp, 65 KAIC

PROJECT NO. MBR-3-208-0300-65

DATE FOR INTERACTION ONLY NOT FOR CONSTRUCTION