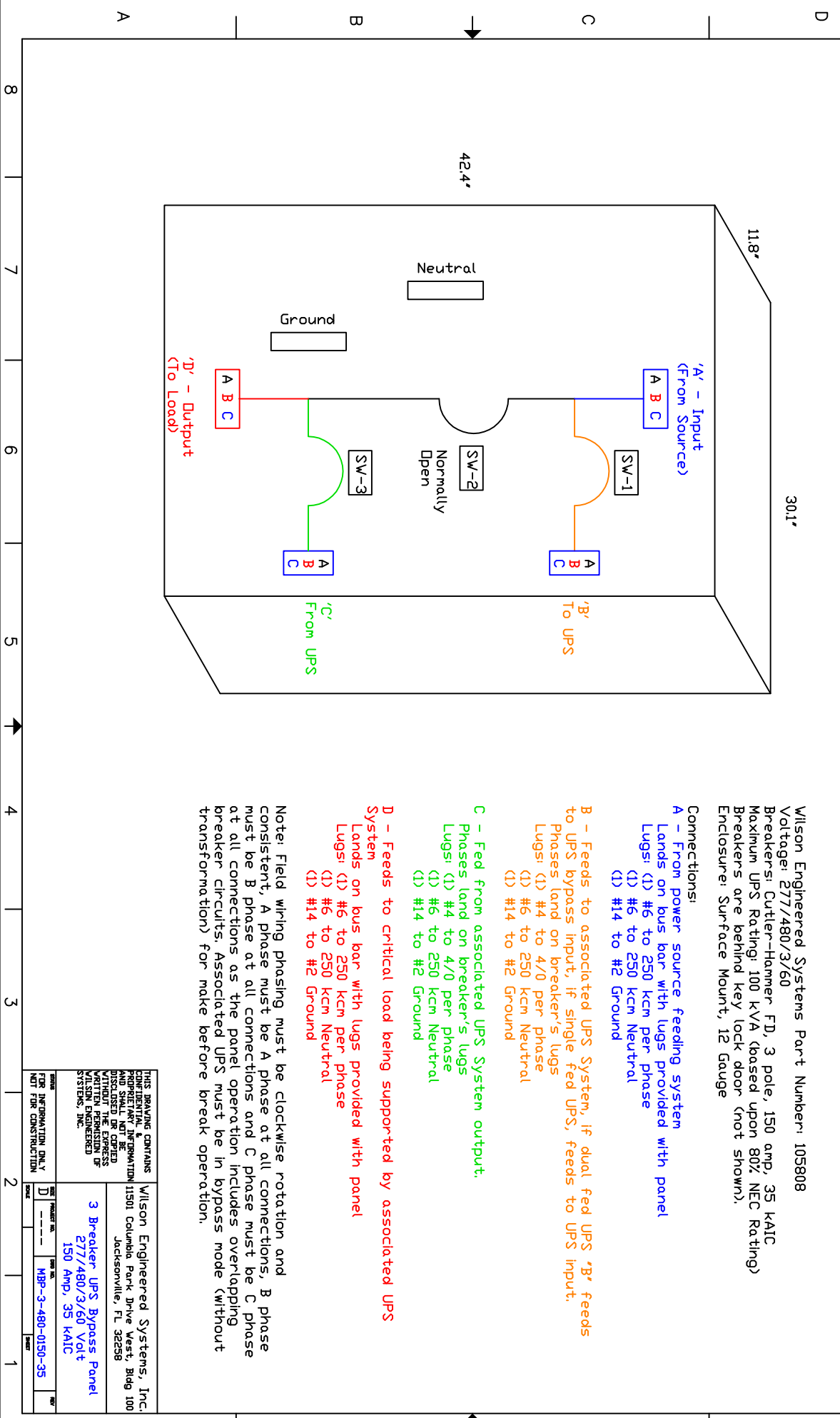


DATE	BY	DESCRIPTION	DATE	APPROVED



Wilson Engineered Systems Part Number: 105808

Voltage: 277/480/3/60

Breakers: Cutler-Hammer FID, 3 pole, 150 amp, 35 KAIC

Maximum UPS Rating: 100 kVA (based upon 80% NEC Rating)

Breakers are behind key lock door (not shown).

Enclosure: Surface Mount, 12 Gauge

Connections:

A - From power source feeding system
Lands on bus bar with lugs provided with panel

Lugs: (1) #6 to 250 kcm Neutral
(1) #6 to #2 Ground

B - Feeds to associated UPS System, if dual fed UPS 'B' feeds to UPS bypass input, if single fed UPS, feeds to UPS input.

Phases land on breaker's lugs

Lugs: (1) #4 to 4/0 per phase
(1) #6 to 250 kcm Neutral
(1) #14 to #2 Ground

C - Feed from associated UPS System output.

Phases land on breaker's lugs

Lugs: (1) #4 to 4/0 per phase
(1) #6 to 250 kcm Neutral
(1) #14 to #2 Ground

D - Feeds to critical load being supported by associated UPS System

Lands on bus bar with lugs provided with panel

Lugs: (1) #6 to 250 kcm per phase
(1) #6 to 250 kcm Neutral
(1) #14 to #2 Ground

Note: Field wiring phasing must be clockwise rotation and consistent, A phase must be A phase at all connections, B phase must be B phase at all connections and C phase must be C phase at all connections as the panel operation includes overlapping breaker circuits. Associated UPS must be in bypass mode (without transformation) for make before break operation.

THIS DRAWING CONTAINS
CONFIDENTIAL & PROPRIETARY INFORMATION
AND SHALL NOT BE REPRODUCED OR TRANSMITTED IN ANY FORM OR BY ANY MEANS, ELECTRONIC OR MECHANICAL, WITHOUT THE EXPRESS WRITTEN PERMISSION OF WILSON ENGINEERED SYSTEMS, INC.

Wilson Engineered Systems, Inc.
11501 Columbia Park Drive West, Bldg 100
Jacksonville, FL 32258

3 Breaker UPS Bypass Panel
277/480/3/60 Volt
150 Amp, 35 KAIC

PROJECT NO. MBR-3-480-0150-35

DATE 11/11/18

FOR INFORMATION ONLY
NOT FOR CONSTRUCTION