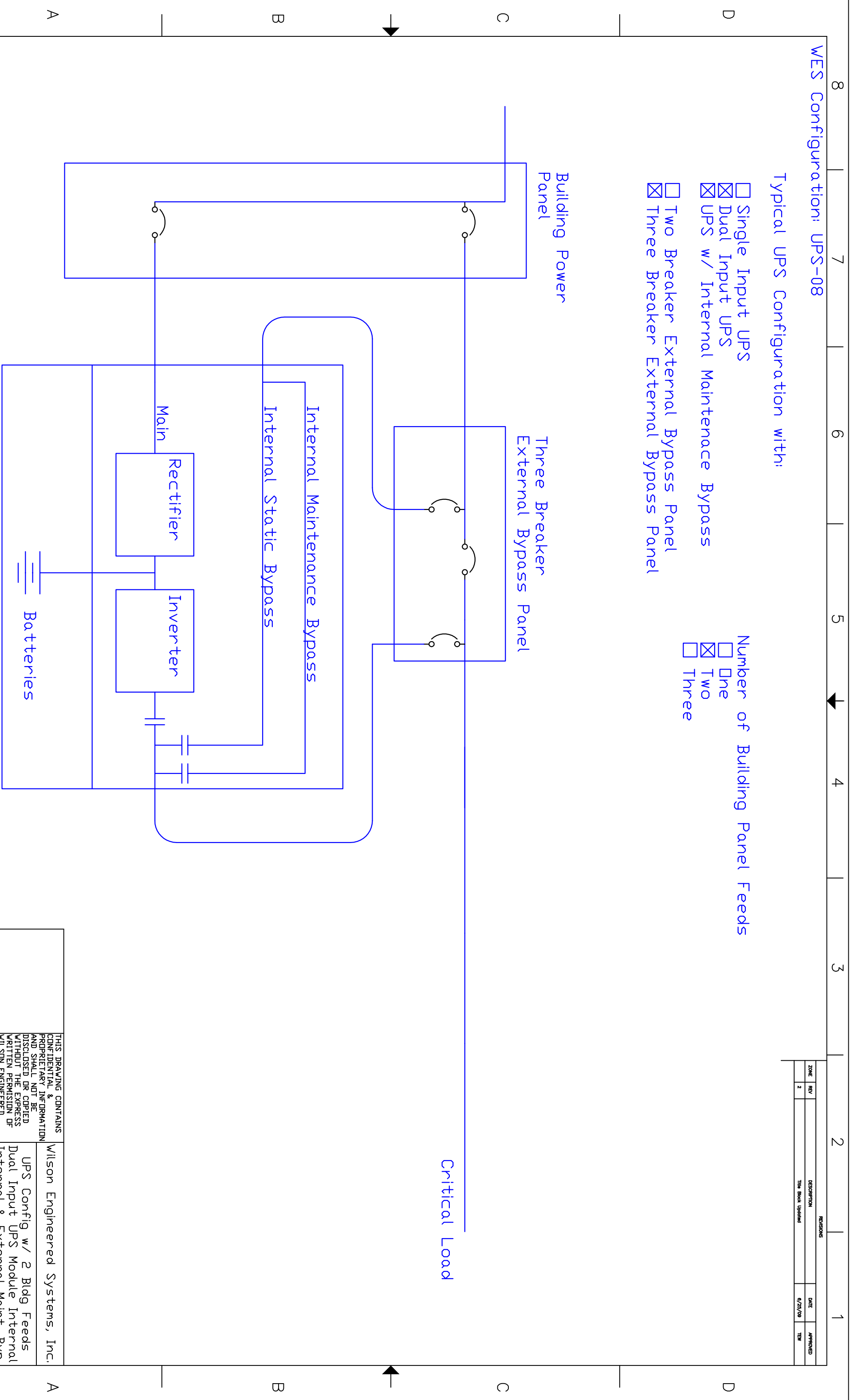


Typical UPS Configuration with:

- Single Input UPS
- Dual Input UPS
- UPS w/ Internal Maintenance Bypass
- Two Breaker External Bypass Panel
- Three Breaker External Bypass Panel

Number of Building Panel Feeds

- One
- Two
- Three



| REVISIONS | | | |
|-----------|-----|---------------------|----------|
| ZONE | REV | DESCRIPTION | DATE |
| | 2 | Title Block Updated | 6/25/09 |
| | | | APPROVED |
| | | | TECH |

THIS DRAWING CONTAINS CONFIDENTIAL & PROPRIETARY INFORMATION AND SHALL NOT BE DISCLOSED OR COPIED WITHOUT THE EXPRESS WRITTEN PERMISSION OF WILSON ENGINEERED SYSTEMS, INC.

Wilson Engineered Systems, Inc.
 UPS Config w/ 2 Bldg Feeds
 Dual Input UPS Module Internal
 Internal & External Maint. Byp.

| | | | |
|------|-------------|----------|-------|
| SIZE | PROJECT NO. | DWG NO. | SHEET |
| D | ---- | std-1008 | 2 |

STANDS FOR INFORMATION ONLY NOT FOR CONSTRUCTION